

Recombinant Human APPBP2 protein, GST-tagged

Cat. No. APPBP2-723H Lot. No. (See product label)

SPECIFICATION

Product Overview	Human APPBP2 full-length ORF (NP_006371.2, 1 a.a. - 585 a.a.) recombinant protein with GST-tag at N-terminal.
Species	Human
Source	Wheat Germ
Description	This gene is a member of the apolipoprotein family. Members of this protein family are involved in the transport and metabolism of lipids. The encoded protein associates with HDL, LDL and VLDL lipoproteins and is characterized by chondroitin-sulfate glycosylation. This protein may be involved in preventing lipid accumulation in the myocardium in obese and diabetic patients. Alternative splicing results in multiple transcript variants. Pseudogenes of this gene are found on chromosomes 3, 4, 5, 12 and 16.[provided by RefSeq, Sep 2009]
Molecular Mass	93.3 kDa
AA Sequence	MAAVELEWIPETLYNTAISAVVDNYIRSRDIRSLPENIQFDVYYKLYQQGRLCQLGS EFCELEVFAKVLRALDKRHLLHHCFCALMDHGVKVASVLAYSFSRRCSYIAESDAAV KEKAIQVGFVLGGFLSDAGWYSDAEKVFLSCLQLCTLHDEMLHWFRAVECCVRLH VRNGNCKYHLGEETFKLAQTYMDKLSKHGQQANKAALYGELCALLFAKSHYDEAYK WCIEAMKEITAGLPVKVVVDVLRQASKACVVKREFKKAELIKHAVYLARDHFGSKH PKYSDTLLDYGFYLLNVDNICQSVAIYQAALDIRQSVFGGKNIHVATAHEDLAYSSYV HQYSSGKFDNALFHAERAIGIITHILPEDHLLLASSKRVKALILEEIAIDCHNKETEQRLL

 Tel: 1-631-559-9269 1-516-512-3133

 Email: info@creative-biomart.com  Fax: 1-631-938-8127

 45-1 Ramsey Road, Shirley, NY 11967, USA

QEAHDLHLSSLQLAKKAFGEFNVQTAKHYGNLGRLYQSMRKFKEAEEMHIKAIQIKE
 QLLGQEDYEVALSVGHLASLYNYDMNQYENAEKLYLRSIAIGKKLFGEGYSGLEYDY
 RGLIKLYNSIGNYEKVFHEYHNVLSNWNRLRDRQYSVTDALDVDSTSPQSTEEVVQSF
 LISQNVEGPSC

Applications

Enzyme-linked Immunoabsorbent Assay; Western Blot (Recombinant protein);
 Antibody Production; Protein Array

Notes

Best use within three months from the date of receipt of this protein.

Storage

Store at -80 centigrade. Aliquot to avoid repeated freezing and thawing.

Storage Buffer

50 mM Tris-HCl, 10 mM reduced Glutathione, pH=8.0 in the elution buffer.

GENE INFORMATION

Gene Name

[APPBP2 amyloid beta precursor protein \(cytoplasmic tail\) binding protein 2 \[Homo sapiens \]](#)

Official Symbol

[APPBP2](#)

Synonyms

APPBP2; amyloid beta precursor protein (cytoplasmic tail) binding protein 2; amyloid protein-binding protein 2; Hs.84084; KIAA0228; PAT1; protein interacting with APP tail 1; APP-BP2; amyloid beta precursor protein-binding protein 2; HS.84084;

Gene ID

[10513](#)

mRNA Refseq

[NM_006380](#)

Protein Refseq

[NP_006371](#)

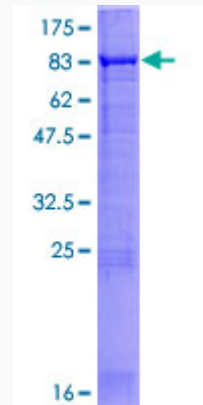
 Tel: 1-631-559-9269 1-516-512-3133

 Email: info@creative-biomart.com  Fax: 1-631-938-8127

 45-1 Ramsey Road, Shirley, NY 11967, USA

MIM 605324

UniProt ID Q92624



12.5% SDS-PAGE Stained with Coomassie Blue.

 Tel: 1-631-559-9269 1-516-512-3133

 Email: info@creative-biomart.com  Fax: 1-631-938-8127

 45-1 Ramsey Road, Shirley, NY 11967, USA