

Recombinant Human APPL1 protein, GST-tagged

Cat. No. APPL1-725H **Lot. No.** (See product label)

SPECIFICATION

Product Overview	Human APPL1 full-length ORF (NP_036228.1, 1 a.a. - 709 a.a.) recombinant protein with GST-tag at N-terminal.
Species	Human
Source	Wheat Germ
Description	The protein encoded by this gene has been shown to be involved in the regulation of cell proliferation, and in the crosstalk between the adiponectin signalling and insulin signalling pathways. The encoded protein binds many other proteins, including RAB5A, DCC, AKT2, PIK3CA, adiponectin receptors, and proteins of the NuRD/MeCP1 complex. This protein is found associated with endosomal membranes, but can be released by EGF and translocated to the nucleus. [provided by RefSeq, Jul 2008]
Molecular Mass	106.1 kDa
AA Sequence	<pre> MPGIDKLPHEETLEDSPQTRSLLGVFEEDATAISNYMNQLYQAMHRIYDAQNELSAAT HLTSKLLKEYEKQRFPLGGDDEVMSSTLQQFSKVIDELSSCHAVLSTQLADAMMFPI TQFKERDLKEILTKEVFQIASNDHDAAINRYSRLSKKRENDKVKYEVTEDEVYTSRKK QHQTMMHYFCALNTLQYKKKIALLEPLLGYMQAQISFFKMGSENLNEQLEEFANIG TSVQNVRRMDSDIETMQQTIEDLEVASDPLYVDPDPDKFPVNRNLTRKAGYLNA RNKTGLVSSTWDRQFYFTQGGNLSQARGDVAGGLAMDIDNCSVMAVDCEDRRY CFQITSFDGKKSSILQAESKKDHEEWICTINNISKQIYLSNPEETAARVNQSALEAVT </pre>

 Tel: 1-631-559-9269 1-516-512-3133

 Email: info@creative-biomart.com  Fax: 1-631-938-8127

 45-1 Ramsey Road, Shirley, NY 11967, USA

PSPSFQQRHESLRPAAGQSRPPTARTSSSGSLGSESTNLAALSLDSLVPDTPIQFD
 IISPVCEIQPGQAKAFGGGRRRTNPFGESGGSTKSETEDSILHQLFIVRFLGSMEVK
 SDDHPDVVYETMRQILAAARAIHNIFRMTESHLLVTCDCCLKLIDPQTQVTRLTFPLPCV
 VLYATHQENKRLFGFVLRRTSSGRSESNLSSVCYIFESNNEGEKICDSVGLAKQIALHA
 ELDRRASEKQKEIERVKEKQQKELNKQKQIEKDLEEQSRLIAASSRPNQASSEGGQFV
 VLSSSQSEESDLGEGGKKRESEA

Applications

Enzyme-linked Immunoabsorbent Assay; Western Blot (Recombinant protein);
 Antibody Production; Protein Array

Notes

Best use within three months from the date of receipt of this protein.

Storage

Store at -80 centigrade. Aliquot to avoid repeated freezing and thawing.

Storage Buffer

50 mM Tris-HCl, 10 mM reduced Glutathione, pH=8.0 in the elution buffer.

GENE INFORMATION

Gene Name

APPL1 adaptor protein, phosphotyrosine interaction, PH domain and leucine zipper
 containing 1 [Homo sapiens]

Official Symbol

APPL1

Synonyms

APPL1; adaptor protein, phosphotyrosine interaction, PH domain and leucine zipper
 containing 1; DCC-interacting protein 13-alpha; APPL; dip13-alpha; AKT2 interactor;
 signaling adaptor protein DIP13alpha; adapter protein containing PH domain, PTB
 domain and leucine zipper motif 1; adaptor protein containing pH domain, PTB
 domain and leucine zipper motif 1; DIP13alpha;

Gene ID

26060

 Tel: 1-631-559-9269 1-516-512-3133

 Email: info@creative-biomart.com  Fax: 1-631-938-8127

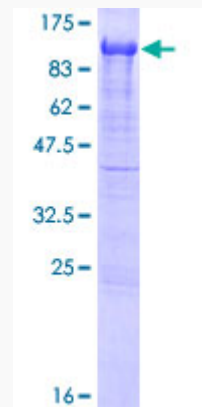
 45-1 Ramsey Road, Shirley, NY 11967, USA

mRNA Refseq NM_012096

Protein Refseq NP_036228

MIM 604299

UniProt ID Q9UKG1



12.5% SDS-PAGE Stained with Coomassie Blue.

Tel: 1-631-559-9269 1-516-512-3133

Email: info@creative-biomart.com Fax: 1-631-938-8127

45-1 Ramsey Road, Shirley, NY 11967, USA