

Recombinant Human APPL2 Protein, Myc/DDK-tagged, C13 and N15-labeled

Cat. No. APPL2-4331H **Lot. No.** (See product label)

SPECIFICATION

Product Overview	APPL2 MS Standard C13 and N15-labeled recombinant protein (NP_060641) with a C-terminal MYC/DDK tag, was expressed in HEK293 cells.
Species	Human
Source	HEK293
Description	<p>The protein encoded by this gene is one of two effectors of the small GTPase RAB5A/Rab5, which are involved in a signal transduction pathway. Both effectors contain an N-terminal Bin/Amphiphysin/Rvs (BAR) domain, a central pleckstrin homology (PH) domain, and a C-terminal phosphotyrosine binding (PTB) domain, and they bind the Rab5 through the BAR domain. They are associated with endosomal membranes and can be translocated to the nucleus in response to the EGF stimulus. They interact with the NuRD/MeCP1 complex (nucleosome remodeling and deacetylase /methyl-CpG-binding protein 1 complex) and are required for efficient cell proliferation. A chromosomal aberration t(12;22)(q24.1;q13.3) involving this gene and the PSAP2 gene results in 22q13.3 deletion syndrome, also known as Phelan-McDermid syndrome.</p>
Molecular Mass	74.5 kDa
AA Sequence	MPAVDKLLLEEALQDSPQTRSLLSVFEEDAGTLTDYTNQLLQAMQRVYGAQNMCL ATQQLSKQLLAYEKQNFALGKGDEEVISTLHYFSKVVDLNLHTELAQLADTMVL

 Tel: 1-631-559-9269 1-516-512-3133

 Email: info@creative-biomart.com  Fax: 1-631-938-8127

 45-1 Ramsey Road, Shirley, NY 11967, USA

PIIQFREKDLTEVSTLKDLFGLASNEHDLSMAKYSRLPKKKENEKVKTEVGKEVAAAR
 RKQHLSSLQYYCALNALQYRKQMAMMEPMIGFAHGQINFFKKGAEEMFSKRMDNFL
 SSVADMVQSIQVELEAEAEKMRVSQQELLSVDESIVYTPDSVVAAPQINRNLIQKAGY
 LNLNRKTGLVTTTWERLYFFTQGGNLMCQPRGAVAGGLIQDLNCSVMAVDCEDR
 RYCFQITTPNGKSGIILQAESRKENEWICAINNISRQIYLTDNPEAVAIAIKLNQTALQAV
 TPITSFGKKQESSCPSQNLKNSEMENENDKIVPKVTASLPEAEELIAPGTPIQFDIVLP
 ATEFLDQNRGSRRTNPFGETEDESFPPEAEDSLLQQMFIVRFLGSMVAVKTDSTTEVIY
 EAMRQVLAARAIHNIFRMTESHLMVTSQSLRLIDPQTQVSRANFELTSVTQFAAHQE
 NKRLVGFVIRVPESTGEEESLSTYIFESNSEGEKICYAINLGKEIIEVQKDPEALAQLMLS
 IPLTNDGKYVLLNDQPDDDDGNPNEHRGAESEATRTRPLEQKLISEEDLAANDILDY
 KDDDDKV

Purity > 80% as determined by SDS-PAGE and Coomassie blue staining

Stability Stable for 3 months from receipt of products under proper storage and handling conditions.

Storage Store at -80 centigrade. Avoid repeated freeze-thaw cycles.

Concentration 50 µg/mL as determined by BCA

Storage Buffer 100 mM glycine, 25 mM Tris-HCl, pH 7.3.

GENE INFORMATION

Gene Name APPL2 adaptor protein, phosphotyrosine interacting with PH domain and leucine zipper 2 [Homo sapiens (human)]

Official Symbol APPL2

Synonyms APPL2; adaptor protein, phosphotyrosine interaction, PH domain and leucine zipper

 Tel: 1-631-559-9269 1-516-512-3133

 Email: info@creative-biomart.com  Fax: 1-631-938-8127

 45-1 Ramsey Road, Shirley, NY 11967, USA

containing 2; DCC-interacting protein 13-beta; DIP13B; FLJ10659; DIP13 beta;
adapter protein containing PH domain, PTB domain and leucine zipper motif 2;

Gene ID 55198

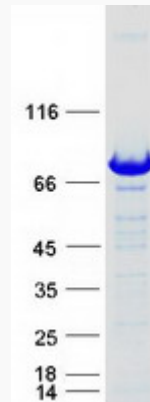
mRNA Refseq NM_018171

Protein Refseq NP_060641

MIM 606231

UniProt ID Q8NEU8

SDS-PAGE



 Tel: 1-631-559-9269 1-516-512-3133

 Email: info@creative-biomart.com  Fax: 1-631-938-8127

 45-1 Ramsey Road, Shirley, NY 11967, USA