

## Recombinant Human APRT protein, GST-tagged

**Cat. No.** APRT-729H    **Lot. No.** (See product label)

### SPECIFICATION

<b>Product Overview</b>	Human APRT full-length ORF ( NP_000476.1, 1 a.a. - 180 a.a.) recombinant protein with GST-tag at N-terminal.
<b>Species</b>	Human
<b>Source</b>	Wheat Germ
<b>Description</b>	Adenine phosphoribosyltransferase belongs to the purine/pyrimidine phosphoribosyltransferase family. A conserved feature of this gene is the distribution of CpG dinucleotides. This enzyme catalyzes the formation of AMP and inorganic pyrophosphate from adenine and 5-phosphoribosyl-1-pyrophosphate (PRPP). It also produces adenine as a by-product of the polyamine biosynthesis pathway. A homozygous deficiency in this enzyme causes 2,8-dihydroxyadenine urolithiasis. Two transcript variants encoding different isoforms have been found for this gene. [provided by RefSeq, Jul 2008]
<b>Molecular Mass</b>	46 kDa
<b>AA Sequence</b>	MADSELQLVEQRIRSFDFPTPGVVFRDISPVLKDPASFRAAIGLLARHLKATHGGRI DYIAGLDSRGLFLGPSLAQELGLGCVLIRKRGKLPGPTLWASYSLEYGKAELEIQKDA LEPGQRVVVDDLLATGGTMNAACELLGRLQAEVLECVSLVELTSLKGREKLAPVPF FSLQYE
<b>Applications</b>	Enzyme-linked Immunoabsorbent Assay; Western Blot (Recombinant protein); Antibody Production; Protein Array

 Tel: 1-631-559-9269    1-516-512-3133

 Email: [info@creative-biomart.com](mailto:info@creative-biomart.com)     Fax: 1-631-938-8127

 45-1 Ramsey Road, Shirley, NY 11967, USA

<b>Notes</b>	Best use within three months from the date of receipt of this protein.
<b>Storage</b>	Store at -80 centigrade. Aliquot to avoid repeated freezing and thawing.
<b>Storage Buffer</b>	50 mM Tris-HCl, 10 mM reduced Glutathione, pH=8.0 in the elution buffer.

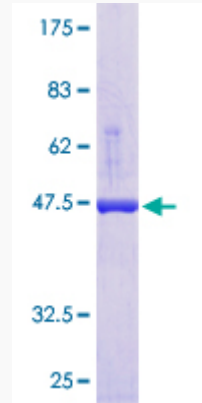
## GENE INFORMATION

<b>Gene Name</b>	APRT adenine phosphoribosyltransferase [ Homo sapiens ]
<b>Official Symbol</b>	APRT
<b>Synonyms</b>	APRT; adenine phosphoribosyltransferase; AMP diphosphorylase; AMP pyrophosphorylase; transphosphoribosidase; AMP; MGC125856; MGC125857; MGC129961; DKFZp686D13177;
<b>Gene ID</b>	353
<b>mRNA Refseq</b>	NM_000485
<b>Protein Refseq</b>	NP_000476
<b>UniProt ID</b>	P07741

 Tel: 1-631-559-9269 1-516-512-3133

 Email: [info@creative-biomart.com](mailto:info@creative-biomart.com)  Fax: 1-631-938-8127

 45-1 Ramsey Road, Shirley, NY 11967, USA



12.5% SDS-PAGE Stained with Coomassie Blue.

 Tel: 1-631-559-9269 1-516-512-3133

 Email: [info@creative-biomart.com](mailto:info@creative-biomart.com)  Fax: 1-631-938-8127

 45-1 Ramsey Road, Shirley, NY 11967, USA