

Recombinant Human APS protein, GST-tagged

Cat. No. APS-730H **Lot. No.** (See product label)

SPECIFICATION

Product Overview	Human APS partial ORF (NP_066189, 311 a.a. - 410 a.a.) recombinant protein with GST-tag at N-terminal.
Species	Human
Source	Wheat Germ
Description	The protein encoded by this gene is expressed in B lymphocytes and contains pleckstrin homology and src homology 2 (SH2) domains. In Burkitt's lymphoma cell lines, it is tyrosine-phosphorylated in response to B cell receptor stimulation. Because it binds Shc independent of stimulation and Grb2 after stimulation, it appears to play a role in signal transduction from the receptor to the Shc/Grb2 pathway. [provided by RefSeq, Jun 2009]
Molecular Mass	36.74 kDa
AA Sequence	EEDTELSCTRGGCLASRVASCSCCELLTDAVDLPRPPETTAVGAVVTAPHSRGRDAV RESLIHVPLETFLQTLESPGGSGSDSNNTGEQGAETDPEAEPEL
Applications	Enzyme-linked Immunoabsorbent Assay; Western Blot (Recombinant protein); Antibody Production; Protein Array
Notes	Best use within three months from the date of receipt of this protein.
Storage	Store at -80 centigrade. Aliquot to avoid repeated freezing and thawing.

 Tel: 1-631-559-9269 1-516-512-3133

 Email: info@creative-biomart.com  Fax: 1-631-938-8127

 45-1 Ramsey Road, Shirley, NY 11967, USA

Storage Buffer 50 mM Tris-HCl, 10 mM reduced Glutathione, pH=8.0 in the elution buffer.

GENE INFORMATION

Gene Name SH2B2 SH2B adaptor protein 2 [Homo sapiens]

Official Symbol SH2B2

Synonyms SH2B2; SH2B adaptor protein 2; SH2B adapter protein 2; adaptor protein with pleckstrin homology and src; APS; SH2 and PH domain-containing adapter protein APS; adapter protein with pleckstrin homology and Src homology 2 domains; adaptor protein with pleckstrin homology and src homology 2 domains;

Gene ID 10603

mRNA Refseq NM_020979

Protein Refseq NP_066189

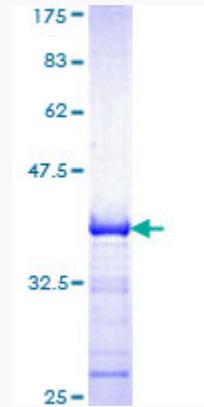
MIM 605300

UniProt ID O14492

 Tel: 1-631-559-9269 1-516-512-3133

 Email: info@creative-biomart.com  Fax: 1-631-938-8127

 45-1 Ramsey Road, Shirley, NY 11967, USA



12.5% SDS-PAGE Stained with Coomassie Blue.

 Tel: 1-631-559-9269 1-516-512-3133

 Email: info@creative-biomart.com  Fax: 1-631-938-8127

 45-1 Ramsey Road, Shirley, NY 11967, USA