

# Recombinant Human AQP1 Full Length Transmembrane protein, His-tagged

**Cat. No.** AQP1-115H    **Lot. No.** (See product label)

## SPECIFICATION

<b>Product Overview</b>	Recombinant Human AQP1 protein(P29972)(2-269aa), fused with N-terminal His Tag, was expressed in E. coli.
<b>Species</b>	Human
<b>Source</b>	E.coli
<b>ProteinLength</b>	2-269aa
<b>Form</b>	If the delivery form is liquid, the default storage buffer is Tris/PBS-based buffer, 5%-50% glycerol. If the delivery form is lyophilized powder, the buffer before lyophilization is Tris/PBS-based buffer, 6% Trehalose, pH 8.0.
<b>Molecular Mass</b>	29.9 kDa
<b>AA Sequence</b>	ASEFKKKLFWRAVVAEFLATTLFVFISIGSALGFKYPVGNNQTAVQDNVKVSLAFGLS IATLAQSVGHISGAHLNPAVTLGLLLSCQISIFRALMYIIAQCVGAIVATAILSGITSSLTG NSLGRNDLADGVNSGQGLGIEIIGTLQLVLCVLATTDRIIRRRDLGGSAPLAIGLSVALG HLLAIDYTGCGINPARSFGSAVITHNFSNHWIFWVGPFIGGALAVLIYDFILAPRSSDL TDRVKVWTSGQVEEYDL DADDINSRVEMKPK
<b>Purity</b>	Greater than 85% as determined by SDS-PAGE.

 Tel: 1-631-559-9269    1-516-512-3133

 Email: [info@creative-biomart.com](mailto:info@creative-biomart.com)     Fax: 1-631-938-8127

 45-1 Ramsey Road, Shirley, NY 11967, USA

**Storage** Store at -20°C/-80°C upon receipt, aliquoting is necessary for mutiple use. Avoid repeated freeze-thaw cycles.

**Reconstitution** Please reconstitute protein in deionized sterile water to a concentration of 0.1-1.0 mg/mL. We recommend to add 5-50% of glycerol (final concentration) and aliquot for long-term storage at -20°C/-80°C. Our default final concentration of glycerol is 50%.

## GENE INFORMATION

**Gene Name** [AQP1 aquaporin 1 \(Colton blood group\) \[ Homo sapiens \]](#)

**Official Symbol** [AQP1](#)

**Synonyms** AQP1; aquaporin 1 (Colton blood group); aquaporin 1 (channel forming integral protein, 28kDa) , aquaporin 1 (channel forming integral protein, 28kDa, CO blood group) , CO, Colton blood group; aquaporin-1; CHIP28; aquaporin-CHIP; Colton blood group; urine water channel; channel-like integral membrane protein, 28-kDa; water channel protein for red blood cells and kidney proximal tubule; aquaporin 1 (channel-forming integral protein, 28kDa, CO blood group); CO; AQP-CHIP; MGC26324;

**Gene ID** [358](#)

**mRNA Refseq** [NM\\_001185060](#)

**Protein Refseq** [NP\\_001171989](#)

**MIM** [107776](#)

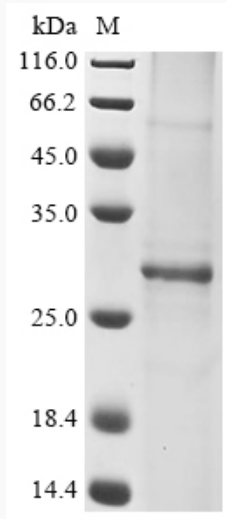
**UniProt ID** [P29972](#)

 Tel: 1-631-559-9269 1-516-512-3133

 Email: [info@creative-biomart.com](mailto:info@creative-biomart.com)  Fax: 1-631-938-8127

 45-1 Ramsey Road, Shirley, NY 11967, USA

**SDS-PAGE**



 Tel: 1-631-559-9269 1-516-512-3133

 Email: [info@creative-biomart.com](mailto:info@creative-biomart.com)  Fax: 1-631-938-8127

 45-1 Ramsey Road, Shirley, NY 11967, USA