

## Recombinant Human AQP2 protein, GST-tagged

Cat. No. AQP2-733H Lot. No. (See product label)

### SPECIFICATION

<b>Product Overview</b>	Human AQP2 full-length ORF ( NP_000477.1, 1 a.a. - 271 a.a.) recombinant protein with GST-tag at N-terminal.
<b>Species</b>	Human
<b>Source</b>	Wheat Germ
<b>Description</b>	This gene encodes a water channel protein located in the kidney collecting tubule. It belongs to the MIP/aquaporin family, some members of which are clustered together on chromosome 12q13. Mutations in this gene have been linked to autosomal dominant and recessive forms of nephrogenic diabetes insipidus. [provided by RefSeq, Oct 2008]
<b>Molecular Mass</b>	55.2 kDa
<b>AA Sequence</b>	MWELRSIAFSRAVFAEFLATLLFVFFGLGSALNWPQALPSVLQIAMAFGLGIGTLVQA LGHISGAHINPAVTVAACLVGCHVSVLRAAFYVAAQLLGAVAGAALLHEITPADIRGDL AVNALSNSTTAGQAVTVELFLTLQLVLCIFASTDERRGENPGTPALSIGFSVALGHLL GIHYTGCSMNPAPSLAPAVVTGKFDDHWVFWIGPLVGAILGSLLYNYVLFPPAKSLS ERLAVLKGLEPDTDWEEREVRRRQSVLHSPQSLPRGTKA
<b>Applications</b>	Enzyme-linked Immunoabsorbent Assay; Western Blot (Recombinant protein); Antibody Production; Protein Array
<b>Notes</b>	Best use within three months from the date of receipt of this protein.

 Tel: 1-631-559-9269 1-516-512-3133

 Email: [info@creative-biomart.com](mailto:info@creative-biomart.com)  Fax: 1-631-938-8127

 45-1 Ramsey Road, Shirley, NY 11967, USA

**Storage** Store at -80 centigrade. Aliquot to avoid repeated freezing and thawing.

**Storage Buffer** 50 mM Tris-HCl, 10 mM reduced Glutathione, pH=8.0 in the elution buffer.

## GENE INFORMATION

**Gene Name** [AQP2 aquaporin 2 \(collecting duct\) \[ Homo sapiens \]](#)

**Official Symbol** [AQP2](#)

**Synonyms** AQP2; aquaporin 2 (collecting duct); aquaporin-2; AQP-2; aquaporin-CD; ADH water channel; water-channel aquaporin 2; collecting duct water channel protein; water channel protein for renal collecting duct; AQP-CD; WCH-CD; MGC34501;

**Gene ID** [359](#)

**mRNA Refseq** [NM\\_000486](#)

**Protein Refseq** [NP\\_000477](#)

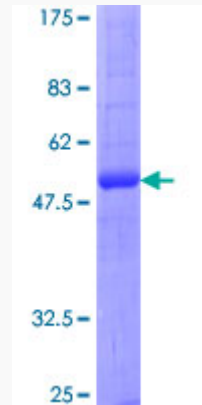
**MIM** [107777](#)

**UniProt ID** [P41181](#)

 Tel: 1-631-559-9269 1-516-512-3133

 Email: [info@creative-biomart.com](mailto:info@creative-biomart.com)  Fax: 1-631-938-8127

 45-1 Ramsey Road, Shirley, NY 11967, USA



12.5% SDS-PAGE Stained with Coomassie Blue.

 Tel: 1-631-559-9269 1-516-512-3133

 Email: [info@creative-biomart.com](mailto:info@creative-biomart.com)  Fax: 1-631-938-8127

 45-1 Ramsey Road, Shirley, NY 11967, USA