

## Active Recombinant Human ARAF (YY301, 302DD) Mutation Protein, GST/His-tagged

Cat. No. ARAF-504H Lot. No. (See product label)

### SPECIFICATION

<b>Product Overview</b>	Recombinant human serine/threonine kinase ARAF, encompassing amino acids 282-606 (end), contains mutations Y301D and Y302D was expressed in Sf9 insect cells. The construct contains a GST-tag at the N-terminal end as well as a C-terminal His-tag (6xhis). The protein was affinity purified.
<b>Species</b>	Human
<b>Source</b>	Insect Cells
<b>ProteinLength</b>	aRAF (GST-282-606(end)-His)
<b>Description</b>	This proto-oncogene belongs to the RAF subfamily of the Ser/Thr protein kinase family, and maybe involved in cell growth and development. Alternatively spliced transcript variants encoding different isoforms have been found for this gene.
<b>Form</b>	Aqueous buffer solution
<b>Bio-activity</b>	6 pmol/min/μg.
<b>Molecular Mass</b>	63 kDa
<b>Purity</b>	61%
<b>Applications</b>	Useful for the study of enzyme kinetics, screening inhibitors, and selectivity profiling.

 Tel: 1-631-559-9269 1-516-512-3133

 Email: [info@creative-biomart.com](mailto:info@creative-biomart.com)  Fax: 1-631-938-8127

 45-1 Ramsey Road, Shirley, NY 11967, USA

<b>Storage</b>	At least 6 months at -80 centigrade.
<b>Storage Buffer</b>	40 mM Tris-HCl pH 8.0, 110 mM NaCl, 2.2 mM KCl, 0.04% Tween-20, 20% glycerol and 3 mM DTT.
<b>Shipping</b>	At -80 centigrade

## GENE INFORMATION

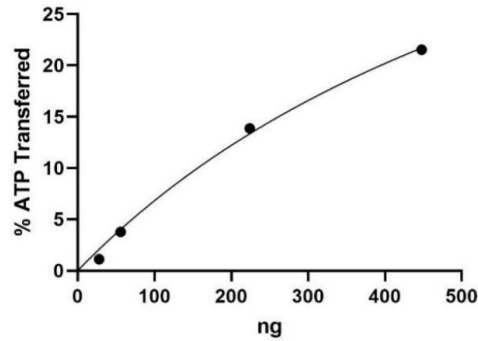
<b>Gene Name</b>	<a href="#">ARAF A-Raf proto-oncogene, serine/threonine kinase [ Homo sapiens (human) ]</a>
<b>Official Symbol</b>	<a href="#">ARAF</a>
<b>Synonyms</b>	ARAF; A-Raf proto-oncogene, serine/threonine kinase; PKS2; A-RAF; ARAF1; RAFA1; serine/threonine-protein kinase A-Raf; A-Raf proto-oncogene serine/threonine-protein kinase; Oncogene ARAF1; Ras-binding protein DA-Raf; proto-oncogene A-Raf-1; proto-oncogene Pks; v-raf murine sarcoma 3611 viral oncogene homolog 1; v-raf murine sarcoma 3611 viral oncogene-like protein; EC 2.7.11.1
<b>Gene ID</b>	<a href="#">369</a>
<b>mRNA Refseq</b>	<a href="#">NM_001654</a>
<b>Protein Refseq</b>	<a href="#">NP_001645</a>
<b>MIM</b>	<a href="#">311010</a>
<b>UniProt ID</b>	<a href="#">P10398</a>

 Tel: 1-631-559-9269 1-516-512-3133

 Email: [info@creative-biomart.com](mailto:info@creative-biomart.com)  Fax: 1-631-938-8127

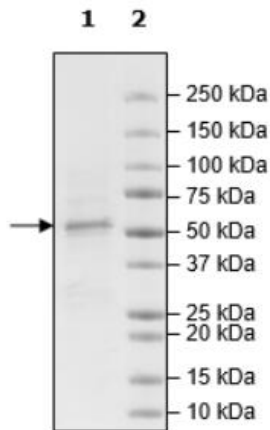
 45-1 Ramsey Road, Shirley, NY 11967, USA

**Specific Activity**



**SDS-PAGE**

**4-20% SDS-Page Coomassie Staining**



 Tel: 1-631-559-9269 1-516-512-3133

 Email: [info@creative-biomart.com](mailto:info@creative-biomart.com)  Fax: 1-631-938-8127

 45-1 Ramsey Road, Shirley, NY 11967, USA