

Recombinant Human ARC protein, GST-tagged

Cat. No. ARC-739H **Lot. No.** (See product label)

SPECIFICATION

Product Overview	Human ARC full-length ORF (NP_056008.1, 1 a.a. - 396 a.a.) recombinant protein with GST-tag at N-terminal.
Species	Human
Source	Wheat Germ
Description	ARC (Activity Regulated Cytoskeleton Associated Protein) is a Protein Coding gene. Diseases associated with ARC include Amphetamine Abuse and Anterograde Amnesia. Among its related pathways are Neuroscience and Cytoskeletal Signaling.
Molecular Mass	71.7 kDa
AA Sequence	MELDHRTSGGLHAYPGPRGGQVAKPNVILQIGKCRAEMLEHVRRTTHRHLLAEVSKQ VERELKGLHRSVGKLESNLDGYVPTSDSQRWKKSIKACLRCQETIANLERWVKRE MHVWREVFYRLERWADRLESTGGKYPVGSESARHTVSVG VGGPESYCHADGYD YTVSPYAITPPPAAGELPGQEPAEAQQYQPWVPGEDGQPSPGVD TQIFEDPREFLS HLEEYLRQVGGSEEYWLSQIQNHMNGPAKKWWEFKQGSVKNWVEFKKEFLQYSE GTLSREAIQRELDLPQKQGEPLDQFLWRKRDLYQTLYVDADEEEIIQYVVGTLQPKL KRFLRHPLPKTLEQLIQRGMEVQDDLEQAAEPAGPHLPVEDEAETLTPAPNSESVAS DRTQPE
Applications	Enzyme-linked Immunoabsorbent Assay; Western Blot (Recombinant protein); Antibody Production; Protein Array

 Tel: 1-631-559-9269 1-516-512-3133

 Email: info@creative-biomart.com  Fax: 1-631-938-8127

 45-1 Ramsey Road, Shirley, NY 11967, USA

Notes	Best use within three months from the date of receipt of this protein.
Storage	Store at -80 centigrade. Aliquot to avoid repeated freezing and thawing.
Storage Buffer	50 mM Tris-HCl, 10 mM reduced Glutathione, pH=8.0 in the elution buffer.

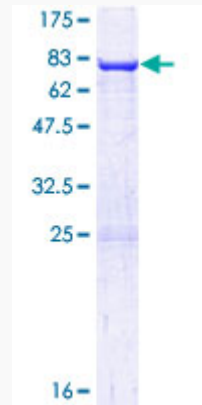
GENE INFORMATION

Gene Name	ARC activity-regulated cytoskeleton-associated protein [Homo sapiens]
Official Symbol	ARC
Synonyms	ARC; activity-regulated cytoskeleton-associated protein; Arg3.1; KIAA0278; ARC/ARG3.1; activity-regulated gene 3.1 protein homolog;
Gene ID	23237
mRNA Refseq	NM_015193
Protein Refseq	NP_056008
MIM	612461
UniProt ID	Q7LC44

 Tel: 1-631-559-9269 1-516-512-3133

 Email: info@creative-biomart.com  Fax: 1-631-938-8127

 45-1 Ramsey Road, Shirley, NY 11967, USA



12.5% SDS-PAGE Stained with Coomassie Blue.

 Tel: 1-631-559-9269 1-516-512-3133

 Email: info@creative-biomart.com  Fax: 1-631-938-8127

 45-1 Ramsey Road, Shirley, NY 11967, USA