

Recombinant Human ARCN1 protein, GST-tagged

Cat. No. ARCN1-740H Lot. No. (See product label)

SPECIFICATION

Product Overview	Human ARCN1 full-length ORF (NP_001646.2, 1 a.a. - 511 a.a.) recombinant protein with GST-tag at N-terminal.
Species	Human
Source	Wheat Germ
Description	This gene maps in a region, which include the mixed lineage leukemia and Friend leukemia virus integration 1 genes, where multiple disease-associated chromosome translocations occur. It is an intracellular protein. Archain sequences are well conserved among eukaryotes and this protein may play a fundamental role in eukaryotic cell biology. It has similarities to heat shock proteins and clathrin-associated proteins, and may be involved in vesicle structure or trafficking. [provided by RefSeq, Jul 2008]
Molecular Mass	83.6 kDa
AA Sequence	MVLLAAAVCTKAGKAIVSRQFVEMTRTRIEGLLAAPKLMNTGKQHTFVETESVRYV YQPMKLYMVLITTKNSNILEDLETLRLLFSRVIPEYCRAL EENEISEHCFDLIFAFDEIV ALGYRENVNLAQIRTFTEMDSHEEKVFRAVRETQEREAKAEMRRKAKELQQARRDA ERQGKKAPGFGGFGSSAVSGGSTAAMITETIIETDKPKVAPAPARPSGSPKALKLGA KGKEVDNFVDKLGSEGETIMSSSMGKRTSEATKMHAPPINMESVHMKIEEKITLTCG RDGGLQNMELHGMIMLRISDDKYGRIRLHVENEDKKG VQLQTHPNVDKLLFTAESLI GLKNPEKSFPVNSDVGVLKWRLQTTEESFIPLTINCWPSESGNGCDVNIEYELQEDN

 Tel: 1-631-559-9269 1-516-512-3133

 Email: info@creative-biomart.com  Fax: 1-631-938-8127

 45-1 Ramsey Road, Shirley, NY 11967, USA

LELNDVVITIPSPGAPVIGEIDGGEYRHDSRRNTLEWCLPVIDAKNKSGSLEFSIAG
 QPNDFFPVQVSFVSKKNYCNIQVTKVTQVDGNSPVRFTSTETFLVDKYEIL

Applications

Enzyme-linked Immunoabsorbent Assay; Western Blot (Recombinant protein);
 Antibody Production; Protein Array

Notes

Best use within three months from the date of receipt of this protein.

Storage

Store at -80 centigrade. Aliquot to avoid repeated freezing and thawing.

Storage Buffer

50 mM Tris-HCl, 10 mM reduced Glutathione, pH=8.0 in the elution buffer.

GENE INFORMATION

Gene Name

[ARCN1 archain 1 \[Homo sapiens \]](#)

Official Symbol

[ARCN1](#)

Synonyms

ARCN1; archain 1; coatomer protein complex, subunit delta , COPD; coatomer subunit delta; delta-COP; delta-coat protein; coatomer delta subunit; coatomer protein delta-COP; archain vesicle transport protein 1; coatomer protein complex, subunit delta; COPD;

Gene ID

[372](#)

mRNA Refseq

[NM_001142281](#)

Protein Refseq

[NP_001135753](#)

MIM

[600820](#)

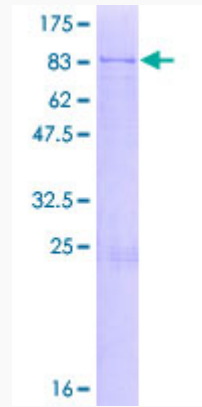
 Tel: 1-631-559-9269 1-516-512-3133

 Email: info@creative-biomart.com  Fax: 1-631-938-8127

 45-1 Ramsey Road, Shirley, NY 11967, USA

UniProt ID

P48444



12.5% SDS-PAGE Stained with Coomassie Blue.

 Tel: 1-631-559-9269 1-516-512-3133

 Email: info@creative-biomart.com  Fax: 1-631-938-8127

 45-1 Ramsey Road, Shirley, NY 11967, USA