

Recombinant Cattle AREG protein, His & GST-tagged

Cat. No. AREG-515C Lot. No. (See product label)

SPECIFICATION

Product Overview	Recombinant Cattle AREG (A5PJE7) aa. (Leu27~Ala247) fused with N-terminal His & GST tag was produced in E. coli cells.
Species	Cattle
Source	E.coli
ProteinLength	Leu27~Ala247
Form	Freeze-dried powder
Molecular Mass	60kDa as determined by SDS-PAGE reducing conditions.
Endotoxin	<1.0EU per 1g (determined by the LAL method)
Purity	> 90%
Characteristic	The isoelectric point is 8.2.
Applications	SDS-PAGE; WB; ELISA; IP
Stability	The thermal stability is described by the loss rate. The loss rate was determined by accelerated thermal degradation test, that is, incubate the protein at 37°C for 48h, and no obvious degradation and precipitation were observed. The loss rate is less than 5% within the expiration date under appropriate storage condition.

 Tel: 1-631-559-9269 1-516-512-3133

 Email: info@creative-biomart.com  Fax: 1-631-938-8127

 45-1 Ramsey Road, Shirley, NY 11967, USA

Storage	Avoid repeated freeze/thaw cycles. Store at 2-8°C for one month. Aliquot and store at -80°C for 12 months.
Storage buffer	PBS, pH7.4, containing 5% sucrose, 0.01% sarcosyl.
Reconstitution	Reconstitute in sterile PBS, pH7.2-pH7.4

GENE INFORMATION

Gene Name	AREG amphiregulin [Bos taurus (cattle)]
Official Symbol	AREG
Synonyms	AREG; AREGB; amphiregulin; amphiregulin (schwannoma-derived growth factor); amphiregulin B
Gene ID	538751
mRNA Refseq	NM_001099092.1
Protein Refseq	NP_001092562.1
UniProt ID	A5PJE7

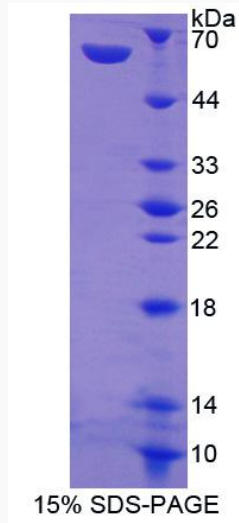
 Tel: 1-631-559-9269 1-516-512-3133

 Email: info@creative-biomart.com  Fax: 1-631-938-8127

 45-1 Ramsey Road, Shirley, NY 11967, USA



SDS-PAGE



Tel: 1-631-559-9269 1-516-512-3133

Email: info@creative-biomart.com Fax: 1-631-938-8127

45-1 Ramsey Road, Shirley, NY 11967, USA