

## Active Recombinant Human AREG protein, His-GST-tagged

Cat. No. AREG-516H Lot. No. (See product label)

### SPECIFICATION

<b>Product Overview</b>	Active Recombinant Human AREG protein(P15514)(20~100 aa), fused with N-terminal His tag and GST tag, was expressed in E.coli.
<b>Species</b>	Human
<b>Source</b>	E.coli
<b>ProteinLength</b>	20-100 aa
<b>Form</b>	Lyophilized from sterile PBS, pH7.4, containing 0.01% SKL, 1mM DTT, 5% Trehalose and Proclin300.
<b>Bio-activity</b>	<p>Amphiregulin (AREG) is a well-characterized member of the epidermal growth factor (EGF) family and is one of the ligands of the EGF receptor (EGFR). AREG plays a key role in mammalian development and in the control of branching morphogenesis in various organs. Furthermore, AREG participates in a wide range of physiological and pathological processes activating the major intracellular signalling cascades governing cell survival, proliferation and motility. Besides, EGF has been identified as an interactor of AREG, thus a functional binding ELISA assay was conducted to detect the interaction of recombinant human AREG and recombinant rat EGF. Briefly, AREG was diluted serially in PBS with 0.01% BSA (pH 7.4). Duplicate samples of 100 µl were then transferred to EGF-coated microtiter wells and incubated for 1h at 37°C. Wells were washed with PBST and incubated for 1h with anti-AREG pAb, then aspirated and washed 3 times. After incubation with HRP labelled secondary antibody</p>

 Tel: 1-631-559-9269 1-516-512-3133

 Email: [info@creative-biomart.com](mailto:info@creative-biomart.com)  Fax: 1-631-938-8127

 45-1 Ramsey Road, Shirley, NY 11967, USA

for 1h at 37°C, wells were aspirated and washed 5 times. With the addition of substrate solution, wells were incubated 15-25 minutes at 37°C. Finally, add 50 μ stop solution to the wells and read at 450/630 nm immediately. The binding activity of recombinant human AREG and recombinant rat EGF was shown, the EC50 for this effect is 0.1 ug/mL.

<b>Molecular Mass</b>	38.6kDa
<b>Endotoxin</b>	<1.0EU per 1μg (determined by the LAL method).
<b>Purity</b>	> 90% as determined by SDS-PAGE.
<b>Storage</b>	Avoid repeated freeze/thaw cycles. Store at -20°C for 12 months. Aliquot and store at -80°C for 12 months.
<b>Reconstitution</b>	Reconstitute in 10mM PBS (pH7.4) to a concentration of 0.1-1.0 mg/mL. Do not vortex.

## GENE INFORMATION

<b>Gene Name</b>	AREG amphiregulin [ Homo sapiens ]
<b>Official Symbol</b>	AREG
<b>Synonyms</b>	AREG; amphiregulin; schwannoma derived growth factor, SDGF; schwannoma-derived growth factor; colorectum cell-derived growth factor; AR; SDGF; AREGB; CRDGF; MGC13647;
<b>Gene ID</b>	374
<b>mRNA Refseq</b>	NM_001657

 Tel: 1-631-559-9269 1-516-512-3133

 Email: [info@creative-biomart.com](mailto:info@creative-biomart.com)  Fax: 1-631-938-8127

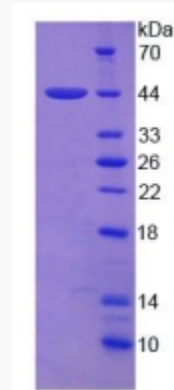
 45-1 Ramsey Road, Shirley, NY 11967, USA

**Protein Refseq** NP\_001648

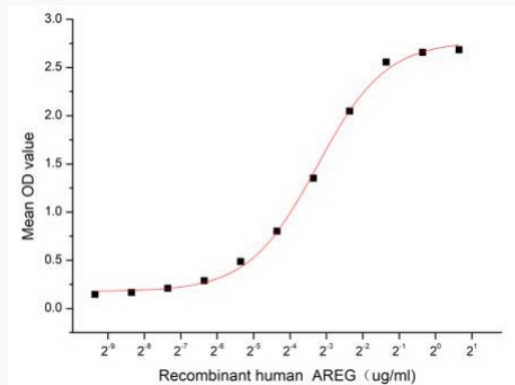
**MIM** 104640

**UniProt ID** P15514

**SDS-PAGE**



**Activity**



Tel: 1-631-559-9269 1-516-512-3133

Email: [info@creative-biomart.com](mailto:info@creative-biomart.com) Fax: 1-631-938-8127

45-1 Ramsey Road, Shirley, NY 11967, USA