

Recombinant Human AREG protein

Cat. No. AREG-529H **Lot. No.** (See product label)

SPECIFICATION

Product Overview	Recombinant Human AREG protein was expressed in Escherichia coli.
Species	Human
Source	E.coli
ProteinLength	98
Description	<p>Amphiregulin is an EGF related growth factor and was originally isolated from the conditioned media of a PMA-treated MCF-7 human breast carcinoma cell line. It is mainly expressed numerous carcinoma cell lines and the epithelial cells of various human tissues including colon, stomach, breast, ovary, kidney, etc. Synthesized as a transmembrane protein, Amphiregulin's extracellular domain is proteolytically processed to release the mature protein. There are 6 conserved cysteine residues, which form 3 intramolecular disulfide bonds essential for biological activity.</p> <p>Amphiregulin signals through the EGF/TGF-α receptor, and stimulates growth of keratinocytes, epithelial cells and some fibroblasts. It also inhibits the growth of certain carcinoma cell lines. Mutations in this encoded protein are associated with a psoriasis-like skin phenotype.</p>
Form	Lyophilized from a 0.2 μ m filtered concentrated solution in PBS, pH 7.4.
Bio-activity	Fully biologically active when compared to standard. The ED50 as determined by a cell proliferation assay using murine Balb/c 3T3 cells is between 5-10 ng/ml.

 Tel: 1-631-559-9269 1-516-512-3133

 Email: info@creative-biomart.com  Fax: 1-631-938-8127

 45-1 Ramsey Road, Shirley, NY 11967, USA

Molecular Mass	Approximately 11.3 kDa, a single non-glycosylated polypeptide chain containing 98 amino acid residues.
AA Sequence	SVRVEQVVKPPQNKTESENTSDKPKRKKKGGKNGKNRRNRKKKNPCNAEFQNFCI HGECKYIEHLEAVTCKCQQEYFGERCGEKSMKTHSMIDSSLSK
Endotoxin	Less than 1 EU/μg of rHuAmphiregulin as determined by LAL method.
Purity	>95% by SDS-PAGE and HPLC analysis.
Storage	Use a manual defrost freezer and avoid repeated freeze-thaw cycles. 12 months from date of receipt, -20 to -70 centigrade as supplied. 1 month, 2 to 8 centigrade under sterile conditions after reconstitution. 3 months, -20 to -70 centigrade under sterile conditions after reconstitution.
Reconstitution	We recommend that this vial be briefly centrifuged prior to opening to bring the contents to the bottom. Reconstitute in sterile distilled water or aqueous buffer containing 0.1 % BSA to a concentration of 0.1-1.0 mg/mL. Stock solutions should be apportioned into working aliquots and stored at ≤-20 centigrade. Further dilutions should be made in appropriate buffered solutions.

GENE INFORMATION

Gene Name	AREG
Official Symbol	AREG
Synonyms	AREG; amphiregulin; schwannoma derived growth factor , SDGF; schwannoma-derived growth factor; colorectum cell-derived growth factor; AR; SDGF; AREGB; CRDGF; MGC13647;

 Tel: 1-631-559-9269 1-516-512-3133

 Email: info@creative-biomart.com  Fax: 1-631-938-8127

 45-1 Ramsey Road, Shirley, NY 11967, USA

Gene ID 374

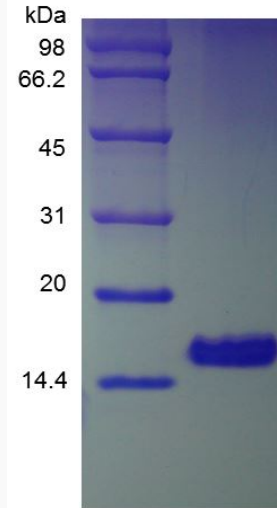
mRNA Refseq NM_001657

Protein Refseq NP_001648

MIM 104640

UniProt ID P15514

SDS-PAGE of AREG-529H



 Tel: 1-631-559-9269 1-516-512-3133

 Email: info@creative-biomart.com  Fax: 1-631-938-8127

 45-1 Ramsey Road, Shirley, NY 11967, USA