

Recombinant Human AREG protein, hFc-tagged

Cat. No. AREG-754H **Lot. No.** (See product label)

SPECIFICATION

Product Overview	Recombinant Human AREG protein(P15514)(Ser101-Lys187), fused with N-terminal hFc tag, was expressed in HEK293.
Species	Human
Source	HEK293
ProteinLength	Ser101-Lys187
Tag	N-hFc
Form	Supplied as 0.22µm filtered solution in PBS (pH 7.4).
Bio-activity	Immobilized Human AREG, hFc Tag at 1ug/ml (100 ul/Well) on the plate. Dose response curve for Biotinylated Anti-AREG Antibody, hFc Tag with the EC50 of 38.2ng/ml determined by ELISA.
Molecular Mass	The protein has a predicted MW of 37.3 kDa. Due to glycosylation, the protein migrates to 45-50 kDa based on Tris-Bis PAGE result.
Endotoxin	Less than 1EU per µg by the LAL method.
Purity	> 95% as determined by Tris-Bis PAGE;> 95% as determined by HPLC
Storage	Valid for 12 months from date of receipt when stored at -80°C. Recommend to aliquot

 Tel: 1-631-559-9269 1-516-512-3133

 Email: info@creative-biomart.com  Fax: 1-631-938-8127

 45-1 Ramsey Road, Shirley, NY 11967, USA

the protein into smaller quantities for optimal storage. Please do not repeated freeze-thaw cycles.

Reconstitution

It is recommended that sterile water be added to the vial to prepare a stock solution of 0.2 ug/ul. Centrifuge the vial at 4°C before opening to recover the entire contents.

GENE INFORMATION

Gene Name [AREG amphiregulin \[Homo sapiens \]](#)

Official Symbol [AREG](#)

Synonyms

AREG; amphiregulin; schwannoma derived growth factor , SDGF; schwannoma-derived growth factor; colorectum cell-derived growth factor; AR; SDGF; AREGB; CRDGF; MGC13647;

Gene ID [374](#)

mRNA Refseq [NM_001657](#)

Protein Refseq [NP_001648](#)

MIM [104640](#)

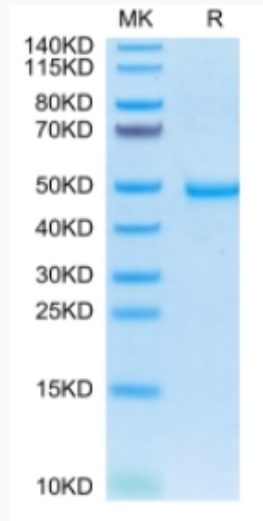
UniProt ID [P15514](#)

 Tel: 1-631-559-9269 1-516-512-3133

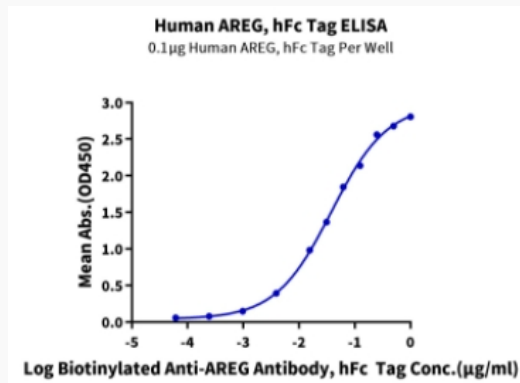
 Email: info@creative-biomart.com  Fax: 1-631-938-8127

 45-1 Ramsey Road, Shirley, NY 11967, USA

Tris-Bis PAGE



ELISA Data



 Tel: 1-631-559-9269 1-516-512-3133

 Email: info@creative-biomart.com  Fax: 1-631-938-8127

 45-1 Ramsey Road, Shirley, NY 11967, USA