

Recombinant Human ARF4L protein, GST-tagged

Cat. No. ARF4L-747H **Lot. No.** (See product label)

SPECIFICATION

Product Overview	Human ARF4L partial ORF (AAH00043, 1 a.a. - 100 a.a.) recombinant protein with GST-tag at N-terminal.
Species	Human
Source	Wheat Germ
Description	ADP-ribosylation factor 4D is a member of the ADP-ribosylation factor family of GTP-binding proteins. ARL4D is closely similar to ARL4A and ARL4C and each has a nuclear localization signal and an unusually high guanine nucleotide exchange rate. This protein may play a role in membrane-associated intracellular trafficking. Mutations in this gene have been associated with Bardet-Biedl syndrome (BBS). [provided by RefSeq, Jul 2008]
Molecular Mass	36.63 kDa
AA Sequence	MGNHLTEMAPTASSFLPHFQALHVVVIGLDSAGKTSLLYRLKFKEFVQSVPTKGFNT EKIRVPLGGSRGITFQVWDVGGQEKLRLPLWRSYTRRTDGLVFV
Applications	Enzyme-linked Immunoabsorbent Assay; Western Blot (Recombinant protein); Antibody Production; Protein Array
Notes	Best use within three months from the date of receipt of this protein.
Storage	Store at -80 centigrade. Aliquot to avoid repeated freezing and thawing.

 Tel: 1-631-559-9269 1-516-512-3133

 Email: info@creative-biomart.com  Fax: 1-631-938-8127

 45-1 Ramsey Road, Shirley, NY 11967, USA

Storage Buffer 50 mM Tris-HCl, 10 mM reduced Glutathione, pH=8.0 in the elution buffer.

GENE INFORMATION

Gene Name ARL4D ADP ribosylation factor like GTPase 4D [Homo sapiens (human)]

Official Symbol ARL4D

Synonyms ARL4D; ADP ribosylation factor like GTPase 4D; ARL6; ARF4L; ADP-ribosylation factor-like protein 4D; ADP-ribosylation factor-like 4D; ADP-ribosylation factor-like 6; ADP-ribosylation factor-like protein 4L

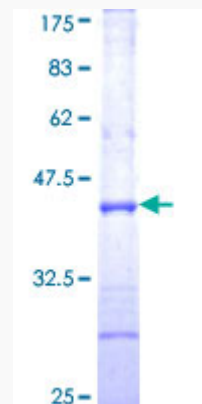
Gene ID 379

mRNA Refseq NM_001661

Protein Refseq NP_001652

MIM 600732

UniProt ID P49703



Tel: 1-631-559-9269 1-516-512-3133

Email: info@creative-biomart.com Fax: 1-631-938-8127

45-1 Ramsey Road, Shirley, NY 11967, USA



12.5% SDS-PAGE Stained with Coomassie Blue.

 Tel: 1-631-559-9269 1-516-512-3133

 Email: info@creative-biomart.com  Fax: 1-631-938-8127

 45-1 Ramsey Road, Shirley, NY 11967, USA