

Recombinant Human ARF6 Protein, Myc/DDK-tagged, C13 and N15-labeled

Cat. No. ARF6-2595H **Lot. No.** (See product label)

SPECIFICATION

Product Overview	ARF6 MS Standard C13 and N15-labeled recombinant protein (NP_001654) with a C-terminal MYC/DDK tag, was expressed in HEK293 cells.
Species	Human
Source	HEK293
Description	This gene encodes a member of the human ARF gene family, which is part of the RAS superfamily. The ARF genes encode small guanine nucleotide-binding proteins that stimulate the ADP-ribosyltransferase activity of cholera toxin and play a role in vesicular trafficking and as activators of phospholipase D. The product of this gene is localized to the plasma membrane, and regulates vesicular trafficking, remodelling of membrane lipids, and signaling pathways that lead to actin remodeling. A pseudogene of this gene is located on chromosome 7.
Molecular Mass	20.1 kDa
AA Sequence	MGKVLISKIFGNKEMRILMLGLDAAGKTTILYKLLKLGQSVTTIPTVGFNVETVYKNVKF NVWDVGGQDKIRPLWRHYTGTQGLIFVDCADRDRIDEARQELHRIINDREMRDAI ILIFANKQDLPDAMKPHIEIQEKLGLTRIRDNRNWWYVQPSCATSGDGLYEGLTWLTSNY KSTRTRPLEQKLISEEDLAANDILDYKDDDDKV
Purity	> 80% as determined by SDS-PAGE and Coomassie blue staining

 Tel: 1-631-559-9269 1-516-512-3133

 Email: info@creative-biomart.com  Fax: 1-631-938-8127

 45-1 Ramsey Road, Shirley, NY 11967, USA

Stability	Stable for 3 months from receipt of products under proper storage and handling conditions.
Storage	Store at -80 centigrade. Avoid repeated freeze-thaw cycles.
Concentration	50 µg/mL as determined by BCA
Storage Buffer	100 mM glycine, 25 mM Tris-HCl, pH 7.3.

GENE INFORMATION

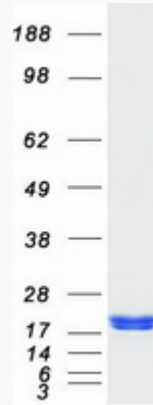
Gene Name	ARF6 ADP-ribosylation factor 6 [Homo sapiens (human)]
Official Symbol	ARF6
Synonyms	ARF6; ADP-ribosylation factor 6; DKFZp564M0264;
Gene ID	382
mRNA Refseq	NM_001663
Protein Refseq	NP_001654
MIM	600464
UniProt ID	P62330

 Tel: 1-631-559-9269 1-516-512-3133

 Email: info@creative-biomart.com  Fax: 1-631-938-8127

 45-1 Ramsey Road, Shirley, NY 11967, USA

SDS-PAGE



 Tel: 1-631-559-9269 1-516-512-3133

 Email: info@creative-biomart.com  Fax: 1-631-938-8127

 45-1 Ramsey Road, Shirley, NY 11967, USA