

# Recombinant Human ADP-ribosylation Factor 6, His-tagged

**Cat. No.** ARF6-3369H    **Lot. No.** (See product label)

## SPECIFICATION

<b>Product Overview</b>	Recombinant human ARF6 protein , fused to His-tag at N-terminus, was expressed in <i>E.coli</i> and purified by using conventional chromatography techniques. MW = 22.2 kDa (195aa).
<b>Species</b>	Human
<b>Source</b>	E.coli
<b>Description</b>	ADP-ribosylation factor 6, also known as ARF6, is a member of the ADP ribosylation factor family of GTP-binding proteins. It is localized to the plasma membrane, and regulates vesicular trafficking, remodelling of membrane lipids, and signaling pathways that lead to actin remodeling. Additionally, ARF6 play a central role in maintenance of organelle integrity, assembly of coat proteins and activation of phospholipase D.
<b>Form</b>	Liquid. In 20mM Tris-HCl buffer (pH 8.0) containing 2mM DTT, 20% glycerol, 0.2mM PMSF.
<b>Purity</b>	> 95% by SDS - PAGE.
<b>Concentration</b>	1.0 mg/ml (determined by Bradford assay).
<b>Sequences Of Amino Acids</b>	MGSSHHHHHH SSGLVPRGSH MGKVLKIFG NKEMRILMLG LDAAGKTTIL YKL KLGQSVT TIPTVGFNVE TVTYKNVKFN VWDVGGQDKIRPLWRHYYTG TQGLIF VV DC ADRDRIDEAR QELHRIINDR EMRDAILIF ANKQDLPDAM KPHEIQEKLG

 Tel: 1-631-559-9269    1-516-512-3133

 Email: [info@creative-biomart.com](mailto:info@creative-biomart.com)     Fax: 1-631-938-8127

 45-1 Ramsey Road, Shirley, NY 11967, USA

LTRIRDRNWY VQPSCATSGDGLYEGLTWLT SNYKS.

**Storage**

Can be stored at +4°C short term (1-2 weeks). For long term storage, aliquot and store at -20°C or -70°C. Avoid repeated freezing and thawing cycles.

**Fuction**

GTP binding; GTPase activity; nucleotide binding; protein binding; thioesterase binding

**Pathways**

Endocytosis; Fc gamma R-mediated phagocytosis

## GENE INFORMATION

**Gene Name**

[ARF6 ADP-ribosylation factor 6 \[ Homo sapiens \]](#)

**Synonyms**

ADP-ribosylation factor 6; DKFZp564M0264; ARF6

**Gene ID**

[382](#)

**mRNA Refseq**

[NM\\_001663](#)

**Protein Refseq**

[NP\\_001654](#)

**MIM**

[600464](#)

**UniProt ID**

[P62330](#)

**Chromosome  
Location**

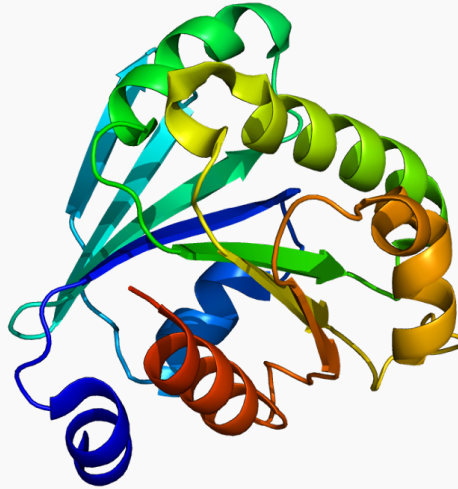
14q21.3

 Tel: 1-631-559-9269 1-516-512-3133

 Email: [info@creative-biomart.com](mailto:info@creative-biomart.com)  Fax: 1-631-938-8127

 45-1 Ramsey Road, Shirley, NY 11967, USA

PDB rendering based  
on 1e0s.



 Tel: 1-631-559-9269 1-516-512-3133

 Email: [info@creative-biomart.com](mailto:info@creative-biomart.com)  Fax: 1-631-938-8127

 45-1 Ramsey Road, Shirley, NY 11967, USA