

Recombinant Full Length Human ARFGAP1 Protein, C-Flag-tagged

Cat. No. ARFGAP1-1445HFL **Lot. No.** (See product label)

SPECIFICATION

Product Overview	Recombinant Full Length Human ARFGAP1 Protein, fused to Flag-tag at C-terminus, was expressed in Mammalian cells.
Species	Human
Source	Mammalian Cells
Description	The protein encoded by this gene is a GTPase-activating protein, which associates with the Golgi apparatus and which interacts with ADP-ribosylation factor 1. The encoded protein promotes hydrolysis of ADP-ribosylation factor 1-bound GTP and is required for the dissociation of coat proteins from Golgi-derived membranes and vesicles. Dissociation of the coat proteins is required for the fusion of these vesicles with target compartments. The activity of this protein is stimulated by phosphoinositides and inhibited by phosphatidylcholine. Alternative splicing results in multiple transcript variants.
Form	25 mM Tris HCl, pH 7.3, 100 mM glycine, 10% glycerol.
Molecular Mass	45.5 kDa
AA Sequence	MASPRTRKVLKEVRVQDENNVCFECGAFNPQWVSVTYGIWICLECSGRHRGLGVH LSFVRSVTMDKWKDI ELEKMKAGGNAKFREFLESQEDYDPCWSLQEKYNSRAAAL FRDKVVALAEGREWSLESSPAQNWTPPQPR TLPSMVHRVSGQPQSVTASSDKAF EDWLNDLGLSYQGAQGNRYVGFNTPPPQKKEDDFLNNAMSSLYSG WSSFTTGA

 Tel: 1-631-559-9269 1-516-512-3133

 Email: info@creative-biomart.com  Fax: 1-631-938-8127

 45-1 Ramsey Road, Shirley, NY 11967, USA



SRFASAAKEGATKFGSQASQKFWGHKQQPEPASELGHSLNENVLKPAQEKVKEGK
IFDDVSS GVSQ LASKGVGSKGWRDVTTFFSGKAEGPLDSPSEGHSYQNSGLDHFQ
NSNIDQSFWETFGSAEPTKTRK
SPSSDSWTCADTSTERRSSDSWEVWGSASTNRNSNSDGGEGGEGTKKAVPPAVP
TDDGWDNQNWTRTRPLEQKLISEEDLAANDILDYKDDDDKV

Purity > 80% as determined by SDS-PAGE and Coomassie blue staining.

Stability Stable for 12 months from the date of receipt of the product under proper storage and handling conditions. Avoid repeated freeze-thaw cycles.

Storage Store at -80 centigrade.

Concentration >50 ug/mL as determined by microplate BCA method.

Preparation Recombinant protein was captured through anti-DDK affinity column followed by conventional chromatography steps.

Protein Pathways Endocytosis

Full Length Full L.

GENE INFORMATION

Gene Name [ARFGAP1 ADP ribosylation factor GTPase activating protein 1 \[Homo sapiens \(human\) \]](#)

Official Symbol [ARFGAP1](#)

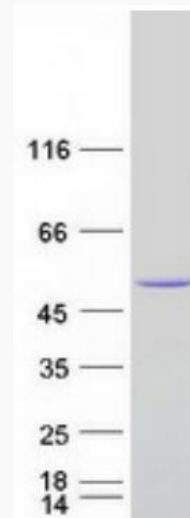
Synonyms ARF1GAP; HRIHFB2281

Tel: 1-631-559-9269 1-516-512-3133

Email: info@creative-biomart.com Fax: 1-631-938-8127

45-1 Ramsey Road, Shirley, NY 11967, USA

Gene ID	55738
mRNA Refseq	NM_175609.3
Protein Refseq	NP_783202.1
MIM	608377
UniProt ID	Q8N6T3



Coomassie blue staining of purified ARFGAP1 protein.

 Tel: 1-631-559-9269 1-516-512-3133

 Email: info@creative-biomart.com  Fax: 1-631-938-8127

 45-1 Ramsey Road, Shirley, NY 11967, USA