

## Recombinant Human ARFGAP1 protein, GST-tagged

**Cat. No.** ARFGAP1-750H    **Lot. No.** (See product label)

### SPECIFICATION

<b>Product Overview</b>	Human ARFGAP1 full-length ORF ( AAH28233, 1 a.a. - 414 a.a.) recombinant protein with GST-tag at N-terminal.
<b>Species</b>	Human
<b>Source</b>	Wheat Germ
<b>Description</b>	The protein encoded by this gene is a GTPase-activating protein, which associates with the Golgi apparatus and which interacts with ADP-ribosylation factor 1. The encoded protein promotes hydrolysis of ADP-ribosylation factor 1-bound GTP and is required for the dissociation of coat proteins from Golgi-derived membranes and vesicles. Dissociation of the coat proteins is required for the fusion of these vesicles with target compartments. The activity of this protein is stimulated by phosphoinositides and inhibited by phosphatidylcholine. Alternative splicing results in multiple transcript variants. [provided by RefSeq, Jul 2013]
<b>Molecular Mass</b>	71.28 kDa
<b>AA Sequence</b>	MASPRTRKVLKEVRVQDENNVCFECGAFNPQWVSVTYGIWICLECSGRHRGLGVH LSFVRSVTMDKWKDIELEKMKAGGNAKFREFLESQEDYDPCWSLQEKYNSRAALF RDKVVALAEGREWSLESSPAQNWTTPPQPRTLPSMVHRVSGQPQSVTASSDKAFED WLNDLGSYQGAQGNRYVGFNTPPPQKKEDDFLNNAMSSLYSGWSSFTTGASR FASAAKEGATKFGSQASQKFWGHKQQPEPASELGHSLNENVLKPAQEKVKEGKIFD DVSSGVSQ LASKGVGSKGWRDVTTFFSGKAEGPLDSPSEGHSYQNSGLDHFQNS

 Tel: 1-631-559-9269    1-516-512-3133

 Email: [info@creative-biomart.com](mailto:info@creative-biomart.com)     Fax: 1-631-938-8127

 45-1 Ramsey Road, Shirley, NY 11967, USA

NIDQSFWETFGSAEPTKTRKSPSSDSWTCADTSTERRSSDSWEVWGSASTNRNSN  
SDGGEGGEGTKKAVPPAVPTDDGWDNQNW

**Applications**

Enzyme-linked Immunoabsorbent Assay; Western Blot (Recombinant protein);  
Antibody Production; Protein Array

**Notes**

Best use within three months from the date of receipt of this protein.

**Storage**

Store at -80 centigrade. Aliquot to avoid repeated freezing and thawing.

**Storage Buffer**

50 mM Tris-HCl, 10 mM reduced Glutathione, pH=8.0 in the elution buffer.

## GENE INFORMATION

**Gene Name**

[ARFGAP1 ADP-ribosylation factor GTPase activating protein 1 \[ Homo sapiens \]](#)

**Official Symbol**

[ARFGAP1](#)

**Synonyms**

ARFGAP1; ADP-ribosylation factor GTPase activating protein 1; ADP ribosylation factor 1 GTPase activating protein , ARF1GAP; ADP-ribosylation factor GTPase-activating protein 1; bA261N11.3; FLJ10767; ARF1 GAP; ARF GAP 1; GAP protein; ARF1-directed GTPase-activating protein; ADP-ribosylation factor 1 GTPase activating protein; ADP-ribosylation factor 1 GTPase-activating protein; ARF1GAP; HRIHFB2281; MGC39924;

**Gene ID**

[55738](#)

**mRNA Refseq**

[NM\\_018209](#)

**Protein Refseq**

[NP\\_060679](#)

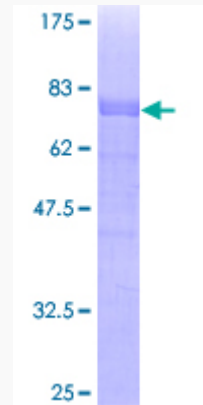
 Tel: 1-631-559-9269 1-516-512-3133

 Email: [info@creative-biomart.com](mailto:info@creative-biomart.com)  Fax: 1-631-938-8127

 45-1 Ramsey Road, Shirley, NY 11967, USA

MIM 608377

UniProt ID Q8N6T3



12.5% SDS-PAGE Stained with Coomassie Blue.

Tel: 1-631-559-9269 1-516-512-3133

Email: [info@creative-biomart.com](mailto:info@creative-biomart.com) Fax: 1-631-938-8127

45-1 Ramsey Road, Shirley, NY 11967, USA