

Recombinant Human ARFGEF1 protein, GST-tagged

Cat. No. ARFGEF1-752H Lot. No. (See product label)

SPECIFICATION

Product Overview	Human ARFGEF1 partial ORF (NP_006412.2, 311 a.a. - 411 a.a.) recombinant protein with GST-tag at N-terminal.
Species	Human
Source	Wheat Germ
Description	ADP-ribosylation factors (ARFs) play an important role in intracellular vesicular trafficking. The protein encoded by this gene is involved in the activation of ARFs by accelerating replacement of bound GDP with GTP. It contains a Sec7 domain, which may be responsible for guanine-nucleotide exchange activity and also brefeldin A inhibition. [provided by RefSeq, Aug 2011]
Molecular Mass	36.85 kDa
AA Sequence	EVLYDGENHDCEEKPKQDIVQNIVEEMVNIVVGDMGEGTTINASADGNIGTIEDGSDS ENIQANGIPGTPISVAYTPSLPDDRLSVSSNDTQESGNSSGPSP
Applications	Enzyme-linked Immunoabsorbent Assay; Western Blot (Recombinant protein); Antibody Production; Protein Array
Notes	Best use within three months from the date of receipt of this protein.
Storage	Store at -80 centigrade. Aliquot to avoid repeated freezing and thawing.

 Tel: 1-631-559-9269 1-516-512-3133

 Email: info@creative-biomart.com  Fax: 1-631-938-8127

 45-1 Ramsey Road, Shirley, NY 11967, USA

Storage Buffer 50 mM Tris-HCl, 10 mM reduced Glutathione, pH=8.0 in the elution buffer.

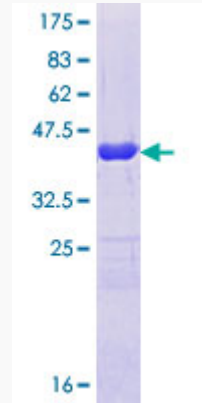
GENE INFORMATION

Gene Name	ARFGEF1 ADP-ribosylation factor guanine nucleotide-exchange factor 1 (brefeldin A-inhibited) [Homo sapiens]
Official Symbol	ARFGEF1
Synonyms	ARFGEF1; ADP-ribosylation factor guanine nucleotide-exchange factor 1 (brefeldin A-inhibited); brefeldin A-inhibited guanine nucleotide-exchange protein 1; ARFGEP1; BIG1; DKFZP434L057; p200; p200 ARF guanine nucleotide exchange factor; P200;
Gene ID	10565
mRNA Refseq	NM_006421
Protein Refseq	NP_006412
MIM	604141
UniProt ID	Q9Y6D6

 Tel: 1-631-559-9269 1-516-512-3133

 Email: info@creative-biomart.com  Fax: 1-631-938-8127

 45-1 Ramsey Road, Shirley, NY 11967, USA



12.5% SDS-PAGE Stained with Coomassie Blue.

 Tel: 1-631-559-9269 1-516-512-3133

 Email: info@creative-biomart.com  Fax: 1-631-938-8127

 45-1 Ramsey Road, Shirley, NY 11967, USA