

Recombinant Human ARFIP1 protein, GST-tagged

Cat. No. ARFIP1-753H Lot. No. (See product label)

SPECIFICATION

Product Overview	Human ARFIP1 full-length ORF (NP_001020766.1, 1 a.a. - 373 a.a.) recombinant protein with GST-tag at N-terminal.
Species	Human
Source	Wheat Germ
Description	ARFIP1 (ADP Ribosylation Factor Interacting Protein 1) is a Protein Coding gene. GO annotations related to this gene include protein domain specific binding and phosphatidylinositol-4-phosphate binding. An important paralog of this gene is ARFIP2.
Molecular Mass	68.1 kDa
AA Sequence	MAQESPKNSAAEIPVTSNGEVDDSREHSFNRLKHSLPSGLGLSETQITSHGFDNTK EGVIEAGAFQGSPAPPLPSVMSPSRVAASRLAQQGSIDLIVPAGGQRTQTKSGPVILA DEIKNPAMEKLELVKWSLNTYKCTRQIISEKLGGRSRTVDLELEAQIDILRDNKKKY ENILKLAQTLSTQLFQMVHTQRQLGDAFADLSLKSLELHEEFGYNADTQKLLAKNGE TLLGAINFFIASVNTLVNKTIEDTLMTVKQYESARIEYDAYRTDLEELNLGPRDANTLP KIEQSQHLLFQAHKEKYDKMRNDVSVKLFLEENKVKVLHNQLVLFHNAIAAYFAGNQ KQLEQTLKQFHIKLTGVDAPSWLEEQ
Applications	Enzyme-linked Immunoabsorbent Assay; Western Blot (Recombinant protein); Antibody Production; Protein Array
Notes	Best use within three months from the date of receipt of this protein.

 Tel: 1-631-559-9269 1-516-512-3133

 Email: info@creative-biomart.com  Fax: 1-631-938-8127

 45-1 Ramsey Road, Shirley, NY 11967, USA

Storage Store at -80 centigrade. Aliquot to avoid repeated freezing and thawing.

Storage Buffer 50 mM Tris-HCl, 10 mM reduced Glutathione, pH=8.0 in the elution buffer.

GENE INFORMATION

Gene Name ARFIP1 ADP-ribosylation factor interacting protein 1 [Homo sapiens]

Official Symbol ARFIP1

Synonyms ARFIP1; ADP-ribosylation factor interacting protein 1; arfaptin-1; arfaptin 1; HSU52521; ADP-ribosylation factor-interacting protein 1; MGC117369;

Gene ID 27236

mRNA Refseq NM_001025593

Protein Refseq NP_001020764

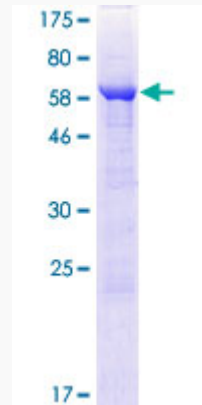
MIM 605928

UniProt ID P53367

 Tel: 1-631-559-9269 1-516-512-3133

 Email: info@creative-biomart.com  Fax: 1-631-938-8127

 45-1 Ramsey Road, Shirley, NY 11967, USA



12.5% SDS-PAGE Stained with Coomassie Blue.

 Tel: 1-631-559-9269 1-516-512-3133

 Email: info@creative-biomart.com  Fax: 1-631-938-8127

 45-1 Ramsey Road, Shirley, NY 11967, USA