

Recombinant Human ARFIP2 protein, GST-tagged

Cat. No. ARFIP2-754H **Lot. No.** (See product label)

SPECIFICATION

Product Overview	Human ARFIP2 full-length ORF (NP_036534.1, 1 a.a. - 341 a.a.) recombinant protein with GST-tag at N-terminal.
Species	Human
Source	Wheat Germ
Description	ARFIP2 (ADP Ribosylation Factor Interacting Protein 2) is a Protein Coding gene. Among its related pathways are Cytoskeleton remodeling_Role of PDGFs in cell migration and Vesicle-mediated transport. GO annotations related to this gene include GTP binding and Rac GTPase binding. An important paralog of this gene is ARFIP1.
Molecular Mass	64.3 kDa
AA Sequence	MTDGILGKAATMEIPIHGNGEARQLPEDDGLQDLQQVMVSGPNLNETSIVSGGYG GSGDGLIPTGSGRHPHSHSTTPSGPGDEVARGIAGEKFDIVKKWGINTYKCTKQLLSE RFGRGSRVTDLELELQIELLRETKRKYESVLQLGRALTAHLYSLLQTQHALGDAFADL SQKSPELQEEFGYNAETQKLLCKNGETLLGAVNFFVSSINTLVTKTMEDTLMTVKQY EAARLEYDAYRTDLEELSLGPRDAGTRGRLESAQATFQAHRDKYEKLRGDVAIKLKF LEENKIKVMHKQLLLFHNAVSAFYFAGNQKQLEQTLQQFNILRPPGAEKPSWLEEQ
Applications	Enzyme-linked Immunoabsorbent Assay; Western Blot (Recombinant protein); Antibody Production; Protein Array

 Tel: 1-631-559-9269 1-516-512-3133

 Email: info@creative-biomart.com  Fax: 1-631-938-8127

 45-1 Ramsey Road, Shirley, NY 11967, USA

Notes	Best use within three months from the date of receipt of this protein.
Storage	Store at -80 centigrade. Aliquot to avoid repeated freezing and thawing.
Storage Buffer	50 mM Tris-HCl, 10 mM reduced Glutathione, pH=8.0 in the elution buffer.

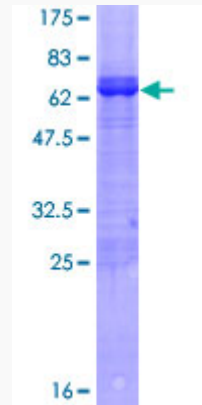
GENE INFORMATION

Gene Name	ARFIP2 ADP-ribosylation factor interacting protein 2 [Homo sapiens]
Official Symbol	ARFIP2
Synonyms	ARFIP2; ADP-ribosylation factor interacting protein 2; arfaptin-2; arfaptin 2; POR1; partner of RAC1 (arfaptin 2); FLJ18046; FLJ18697; FLJ99239;
Gene ID	23647
mRNA Refseq	NM_001242854
Protein Refseq	NP_001229783
MIM	601638
UniProt ID	P53365

 Tel: 1-631-559-9269 1-516-512-3133

 Email: info@creative-biomart.com  Fax: 1-631-938-8127

 45-1 Ramsey Road, Shirley, NY 11967, USA



12.5% SDS-PAGE Stained with Coomassie Blue.

 Tel: 1-631-559-9269 1-516-512-3133

 Email: info@creative-biomart.com  Fax: 1-631-938-8127

 45-1 Ramsey Road, Shirley, NY 11967, USA