

Recombinant Human ARG1 protein, GST-tagged

Cat. No. ARG1-756H **Lot. No.** (See product label)

SPECIFICATION

Product Overview Human ARG1 full-length ORF (AAH20653.1, 1 a.a. - 322 a.a.) recombinant protein with GST-tag at N-terminal.

Species Human

Source Wheat Germ

Description Arginase catalyzes the hydrolysis of arginine to ornithine and urea. At least two isoforms of mammalian arginase exist (types I and II) which differ in their tissue distribution, subcellular localization, immunologic crossreactivity and physiologic function. The type I isoform encoded by this gene, is a cytosolic enzyme and expressed predominantly in the liver as a component of the urea cycle. Inherited deficiency of this enzyme results in argininemia, an autosomal recessive disorder characterized by hyperammonemia. Two transcript variants encoding different isoforms have been found for this gene. [provided by RefSeq, Sep 2011]

Molecular Mass 61.1 kDa

AA Sequence MSAKSRTIGIIGAPFSKQPRGGVEEGPTVLRKAGLLEKLKEQECVDKDYGDLPFAD
 IPNDSPFQIVKNPRSVGKASEQLAGKVAEVKKNGRISLVLGGDHSLAIGSISGHARVH
 PDLGVIWVDAHTDINTPLTTTSGNLHGQPVSFLLKELKKGKIPDVPGFSSWVTPCISAKD
 IVYIGLRDVPGEHYILKTLGIKYFSMTEVDRLGIGKVMEEETLSYLLGRKKRPIHLSFD
 VDGLDPSFTPATGTPVVGGLTYREGLYITEEIIYKTGLLSGLDIMEVNPSLGKTPEEVT
 RTVNTAVAITLACFGLAREGNHKPIDYLNPPK

 Tel: 1-631-559-9269 1-516-512-3133

 Email: info@creative-biomart.com  Fax: 1-631-938-8127

 45-1 Ramsey Road, Shirley, NY 11967, USA

| | |
|-----------------------|---|
| Applications | Enzyme-linked Immunoabsorbent Assay; Western Blot (Recombinant protein); Antibody Production; Protein Array |
| Notes | Best use within three months from the date of receipt of this protein. |
| Storage | Store at -80 centigrade. Aliquot to avoid repeated freezing and thawing. |
| Storage Buffer | 50 mM Tris-HCl, 10 mM reduced Glutathione, pH=8.0 in the elution buffer. |

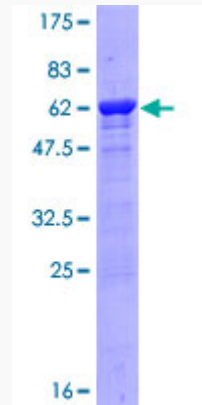
GENE INFORMATION

| | |
|------------------------|--|
| Gene Name | ARG1 arginase, liver [Homo sapiens] |
| Official Symbol | ARG1 |
| Synonyms | ARG1; arginase, liver; arginase-1; type I arginase; liver-type arginase; |
| Gene ID | 383 |
| mRNA Refseq | NM_000045 |
| Protein Refseq | NP_000036 |
| MIM | 608313 |
| UniProt ID | P05089 |

 Tel: 1-631-559-9269 1-516-512-3133

 Email: info@creative-biomart.com  Fax: 1-631-938-8127

 45-1 Ramsey Road, Shirley, NY 11967, USA



12.5% SDS-PAGE Stained with Coomassie Blue.

 Tel: 1-631-559-9269 1-516-512-3133

 Email: info@creative-biomart.com  Fax: 1-631-938-8127

 45-1 Ramsey Road, Shirley, NY 11967, USA