

# Recombinant Escherichia coli ARGF Protein (2-334 aa), His-tagged

**Cat. No.** ARGF-1253E    **Lot. No.** (See product label)

## SPECIFICATION

<b>Product Overview</b>	Recombinant Escherichia coli (strain K12) ARGF Protein (2-334 aa) is produced by E. coli expression system. This protein is fused with a 6xHis tag at the N-terminal. Protein Description: Full Length of Mature Protein.
<b>Species</b>	E.coli
<b>Source</b>	E.coli
<b>ProteinLength</b>	2-334 aa
<b>Description</b>	Reversibly catalyzes the transfer of the carbamoyl group from carbamoyl phosphate (CP) to the N(epsilon) atom of ornithine (ORN) to produce L-citrulline, which is a substrate for argininosuccinate synthetase, the enzyme involved in the final step in arginine biosynthesis.
<b>Form</b>	Tris-based buffer,50% glycerol
<b>Molecular Mass</b>	40.7 kDa
<b>AA Sequence</b>	SDLYKKHFLKLLDFTPAQFTSLLTLAAQLKADKKNNGKEVQKLTGKNIALIFEKDSTRTR CSFEVAAFDQGARVTYLGPSGSQIGHKESIKDTARVLGRMYDGIQYRGHGQEVVET LAQYAGVPVWNGLTNEFHPTQLLADLMTMQEHLPGKAFNEMTLVYAGDARNNMGN SMLEAAALTGLDLRLLAPKACWPEESLVAECSALAEKHGGKITLTEDVAAGVKGADF IYTDVWVSMGAEKEKWAERIALLRGYQVNAQMMALTDNPNVKFLHCLPAFHDDQTT

 Tel: 1-631-559-9269    1-516-512-3133

 Email: [info@creative-biomart.com](mailto:info@creative-biomart.com)     Fax: 1-631-938-8127

 45-1 Ramsey Road, Shirley, NY 11967, USA

LGKQMAKEFDLHGGMEVTDEVFESAASIVFDQAENRMHTIKAVMMATLGE

**Purity** > 90% as determined by SDS-PAGE.

**Notes** Repeated freezing and thawing is not recommended. Store working aliquots at 4 centigrade for up to one week.

**Storage** The shelf life is related to many factors, storage state, buffer ingredients, storage temperature and the stability of the protein itself. Generally, the shelf life of liquid form is 6 months at -20 centigrade/-80 centigrade. The shelf life of lyophilized form is 12 months at -20 centigrade/-80 centigrade.

**Concentration** A hardcopy of COA with reconstitution instruction is sent along with the products. Please refer to it for detailed information.

## GENE INFORMATION

**Gene Name** [argF CP4-6 prophage; ornithine carbamoyltransferase ArgF \[ Escherichia coli str. K-12 substr. MG1655 \]](#)

**Official Symbol** [ARGF](#)

**Synonyms** ECK0274;

**Gene ID** [944844](#)

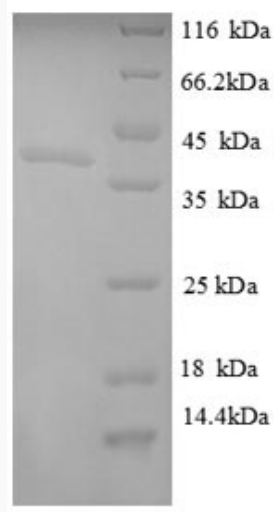
**Protein Refseq** [NP\\_414807](#)

**UniProt ID** [P06960](#)

 Tel: 1-631-559-9269 1-516-512-3133

 Email: [info@creative-biomart.com](mailto:info@creative-biomart.com)  Fax: 1-631-938-8127

 45-1 Ramsey Road, Shirley, NY 11967, USA



(Tris-Glycine gel) Discontinuous SDS-PAGE (reduced) with 5% enrichment gel and 15% separation gel.

 Tel: 1-631-559-9269 1-516-512-3133

 Email: [info@creative-biomart.com](mailto:info@creative-biomart.com)  Fax: 1-631-938-8127

 45-1 Ramsey Road, Shirley, NY 11967, USA