

Recombinant Human ARGLU1 protein, His-tagged

Cat. No. ARGLU1-7843H Lot. No. (See product label)

SPECIFICATION

Product Overview	Recombinant Human ARGLU1 protein(63-191 aa), fused with N-terminal His tag, was expressed in E.coli.
Species	Human
Source	E.coli
ProteinLength	63-191 aa
Form	The purified protein was lyophilized from sterile phosphate-buffered saline (PBS: 58 mM Na ₂ HPO ₄ , 17 mM NaH ₂ PO ₄ , 68 mM NaCl, pH 7.4). Prior to lyophilization, 5% (w/v) trehalose and 5% (w/v) mannitol were incorporated as cryoprotective excipients.
AASequence	TAVSRRERDRERASSPPDRIDIFGRTVSKRSSLDEKQKREEEKKAEFERQQRKIRQQ EIEEKLIIEETARRVEELVAKRVEEELEKRKDEIEREVLRRVVEEAKRIMEKQLLEELER QRQAELAAQKARE
Purity	85%, by SDS-PAGE with Coomassie Brilliant Blue staining.
Storage	Store at 2-8°C for 1-2 weeks. Aliquot and store at -20°C to -80°C for up to 3 months, reconstitution with sterile water and addition of an equal volume of glycerol. Avoid repeat freeze-thaw cycles.
Reconstitution	Dissolve the product in 200 µl sterile water to achieve a working concentration of 0.25

 Tel: 1-631-559-9269 1-516-512-3133

 Email: info@creative-biomart.com  Fax: 1-631-938-8127

 45-1 Ramsey Road, Shirley, NY 11967, USA



g/μl. If experimental compatibility allows, mix the aqueous solution with an equal volume of glycerol (1:1 ratio) after initial reconstitution.

GENE INFORMATION

Gene Name ARGLU1 arginine and glutamate rich 1 [Homo sapiens]

Official Symbol ARGLU1

Synonyms ARGLU1; arginine and glutamate rich 1; arginine and glutamate-rich protein 1; FLJ10154; RP11-297I6.1; DKFZp686O08106;

Gene ID 55082

mRNA Refseq NM_018011

Protein Refseq NP_060481

MIM 614046

UniProt ID Q9NWB6

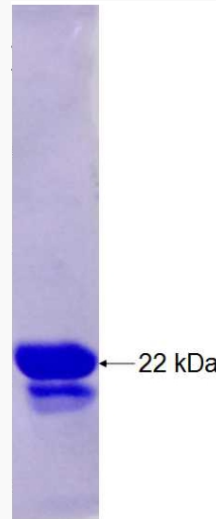
 Tel: 1-631-559-9269 1-516-512-3133

 Email: info@creative-biomart.com  Fax: 1-631-938-8127

 45-1 Ramsey Road, Shirley, NY 11967, USA



SDS-PAGE



Tel: 1-631-559-9269 1-516-512-3133

Email: info@creative-biomart.com Fax: 1-631-938-8127

45-1 Ramsey Road, Shirley, NY 11967, USA