

Recombinant Human ARHGAP12 protein, GST-tagged

Cat. No. ARHGAP12-761H Lot. No. (See product label)

SPECIFICATION

Product Overview	Human ARHGAP12 full-length ORF (AAH94719.1, 1 a.a. - 841 a.a.) recombinant protein with GST-tag at N-terminal.
Species	Human
Source	Wheat Germ
Description	This gene encodes a member of a large family of proteins that activate Rho-type guanosine triphosphate (GTP) metabolizing enzymes. The encoded protein may be involved in suppressing tumor formation by regulating cell invasion and adhesion. Alternatively spliced transcript variants encoding multiple isoforms have been observed for this gene. [provided by RefSeq, Jul 2012]
Molecular Mass	122.2 kDa
AA Sequence	MKMADRSGKIIPGQVYIEVEYDYEYEA KDRKIVIKQGERYILVKKTNDDWWQVKPDE NSKAFYVPAQYVKEVTRKALMPPVKQVAGLPNNSTKIMQSLHLQRSTENVNKLPEL SSFGKPSSSVQGTGLIRDANQNFGPSYNQGQTVNLSLDLTHNNGKFNNDSHSPKV SSQNRTRSFHGFPGPEFLDVEKTSFSQEQSCDSAGEGSERIHQDSESGDELSSSST EQIRATTPPNQGRPDSPVYANLQELKISQSALPPLPGSPA IQINGEWETHKDSSGRC YYNNGRTQERTWKPPRWTRDASISKGDFQNP GDQELLSSEENYYSTSYSQSDSQC GSPPRGWSEELDERGHTLYTSDYTNEKWLKHVDDQGRQY YYSADGSRSEWELPK YNASSQQQREI IKSRLDRRLQEPIVLTKWRHSTIVLDTNDKESPTASKPCFPENESS PSSPKHQD TDQEKYGLLNVTKIAENGKKVRKNWLSSWAVLQGSSLLFTKTQGSSTS

 Tel: 1-631-559-9269 1-516-512-3133

 Email: info@creative-biomart.com  Fax: 1-631-938-8127

 45-1 Ramsey Road, Shirley, NY 11967, USA

WFGSNQSKPEFTVDLKGATIEMASKDKSSKKNVFEKTRQGTELLIQSDNDTVINDW
 FKVLSSTINNQAVETDEGIEEEEIPDSPGIEKHDKEKEQKDPKLLRSFKVSSIDSSEQKK
 TKKNLKKFLTRRPTLQAVREKGYIKDQVFGSNLANLCQRENGTVPKFVKLCIEHVEE
 HGLDIDGIYRVSGNLAVIQKLRFAVNHDEKLDLNDKWDIHVITGALKMFFRELPEP
 LFTFNHFNDFVNAIKQEPRQRVA AVKDLIRQLPKPNQDTMQILFRHLRRVIENGEKNR
 MTYQSIAIVFGPTLLKPEKETGNIAVHTVYQNQIVELILLELSSIFGR

Applications

Enzyme-linked Immunoabsorbent Assay; Western Blot (Recombinant protein);
 Antibody Production; Protein Array

Notes

Best use within three months from the date of receipt of this protein.

Storage

Store at -80 centigrade. Aliquot to avoid repeated freezing and thawing.

Storage Buffer

50 mM Tris-HCl, 10 mM reduced Glutathione, pH=8.0 in the elution buffer.

GENE INFORMATION

Gene Name

ARHGAP12 Rho GTPase activating protein 12 [Homo sapiens]

Official Symbol

ARHGAP12

Synonyms

ARHGAP12; Rho GTPase activating protein 12; rho GTPase-activating protein 12;
 FLJ10971; FLJ20737; FLJ21785; rho-type GTPase-activating protein 12; FLJ45709;
 DKFZp779N2050;

Gene ID

94134

mRNA Refseq

NM_018287

Protein Refseq

NP_060757

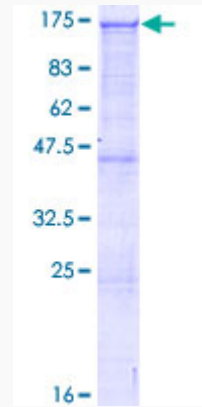
 Tel: 1-631-559-9269 1-516-512-3133

 Email: info@creative-biomart.com  Fax: 1-631-938-8127

 45-1 Ramsey Road, Shirley, NY 11967, USA

MIM 610577

UniProt ID Q8IWW6



12.5% SDS-PAGE Stained with Coomassie Blue.

Tel: 1-631-559-9269 1-516-512-3133

Email: info@creative-biomart.com Fax: 1-631-938-8127

45-1 Ramsey Road, Shirley, NY 11967, USA