

Recombinant Human ARHGAP15 Protein, Myc/DDK-tagged, C13 and N15-labeled

Cat. No. ARHGAP15-2999H Lot. No. (See product label)

SPECIFICATION

Product Overview	ARHGAP15 MS Standard C13 and N15-labeled recombinant protein (NP_060930) with a C-terminal MYC/DDK tag, was expressed in HEK293 cells.
Species	Human
Source	HEK293
Description	RHO GTPases regulate diverse biologic processes, and their activity is regulated by RHO GTPase-activating proteins (GAPs), such as ARHGAP15.
Molecular Mass	54.5 kDa
AA Sequence	<p>MQKSTNSDTSVETLNSTRQGTGAVQMRIKNANSHHDRLSQQSKSMILTDVGKVTEPI SRHRRNHSQHILKDVIPPLEQLMVEKEGYLQKAKIADGGKKLRKNWSTSWIVLSSRR IEFYKESKQQALS NMKTGHKPEVDLCGAHIEWAKEKSSRKNVFQITTVSGNEFLQ SDIDFIILDWFHAIKNAIDRLPKDSSCPSRNLELFKIQRSSSTELLSHYDSDIKEQKPEH RKSLMFRLHHSASDTSKDNRVKSRLKKFITRRPSLKTLEKGLIKDQIFGSHLHKVCE RENSTVPWFVKQCIEAVEKRGLDVDGIYRVSGNLATIQLRFIVNQEEKLNLDSSQW EDIHVVTGALKMFFRELPEPLFPYSFFEQFVEAIKKQDNNTRIEAVKSLVQKLPPPNR DTMKVPFGHLTKIVAKASKNLMSTQSLGIVFGPTLLRAENETGNMAIHMVYQNQIAEL MLSEYSKIFGSEEDTRTRPLEQKLISEEDLAANDILDYKDDDDKV</p>
Purity	> 80% as determined by SDS-PAGE and Coomassie blue staining

 Tel: 1-631-559-9269 1-516-512-3133

 Email: info@creative-biomart.com  Fax: 1-631-938-8127

 45-1 Ramsey Road, Shirley, NY 11967, USA



Stability	Stable for 3 months from receipt of products under proper storage and handling conditions.
Storage	Store at -80 centigrade. Avoid repeated freeze-thaw cycles.
Concentration	50 µg/mL as determined by BCA
Storage Buffer	100 mM glycine, 25 mM Tris-HCl, pH 7.3.

GENE INFORMATION

Gene Name	ARHGAP15 Rho GTPase activating protein 15 [Homo sapiens (human)]
Official Symbol	ARHGAP15
Synonyms	ARHGAP15; Rho GTPase activating protein 15; rho GTPase-activating protein 15; BM046; rho-type GTPase-activating protein 15;
Gene ID	55843
mRNA Refseq	NM_018460
Protein Refseq	NP_060930
MIM	610578
UniProt ID	Q53QZ3

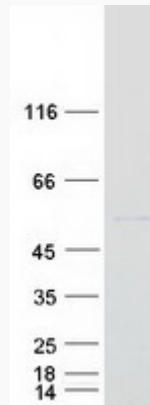
Tel: 1-631-559-9269 1-516-512-3133

Email: info@creative-biomart.com Fax: 1-631-938-8127

45-1 Ramsey Road, Shirley, NY 11967, USA



SDS-PAGE



Tel: 1-631-559-9269 1-516-512-3133

Email: info@creative-biomart.com Fax: 1-631-938-8127

45-1 Ramsey Road, Shirley, NY 11967, USA