

Recombinant Human ARHGAP15 protein, GST-tagged

Cat. No. ARHGAP15-762H Lot. No. (See product label)

SPECIFICATION

Product Overview	Human ARHGAP15 full-length ORF (AAH38976.2, 1 a.a. - 475 a.a.) recombinant protein with GST-tag at N-terminal.
Species	Human
Source	Wheat Germ
Description	RHO GTPases (see ARHA; MIM 165390) regulate diverse biologic processes, and their activity is regulated by RHO GTPase-activating proteins (GAPs), such as ARHGAP15 (Seoh et al., 2003 [PubMed 12650940]).[supplied by OMIM, Mar 2008]
Molecular Mass	80.9 kDa
AA Sequence	<p>MQKSTNSDTSVETLNSTRQGTGAVQMRIKNANSHHDRLSQQSKSMILTDVGKVTEPI SRHRRNHSQHILKDVIPPLEQLMVEKEGYLQKAKIADGGKKLRKNWSTSWIVLSSRR IEFYKESKQQALS NMKTGHKPEVDLCGAHIEWAKEKSSRKNV FQITTVSGNEFLLQ SDIDFIILDWFHAIKNAIDRLPKDSSCPSRNLELFKIQRSSSTELL SHYDS DIKEQKPEH RKSLMFRLHHSASDTS DKNRVKSRLK KFITRRPSL KTLQEKGLIKDQIFGSHLHKVCE RENSTVPWFVKQCIEAVEKRG LDVDGIYRVSGNLATIQLRFIVNQEEKLNLD DSQW EDIHVVTGALKMFFRELPEPLFPYSFFEQFVEAIKKQDNNTRIEAVKSLVQKLPPPNR DTMKVLFGLHTKIVAKASKNLMSTQSLGIVFGPTLLRAENETGNMAIHMVYQNQIAEL MLSEYSKIFGSEED</p>
Applications	Enzyme-linked Immunoabsorbent Assay; Western Blot (Recombinant protein); Antibody Production; Protein Array

 Tel: 1-631-559-9269 1-516-512-3133

 Email: info@creative-biomart.com  Fax: 1-631-938-8127

 45-1 Ramsey Road, Shirley, NY 11967, USA

Notes	Best use within three months from the date of receipt of this protein.
Storage	Store at -80 centigrade. Aliquot to avoid repeated freezing and thawing.
Storage Buffer	50 mM Tris-HCl, 10 mM reduced Glutathione, pH=8.0 in the elution buffer.

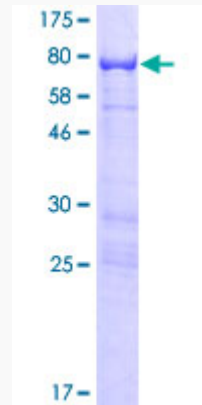
GENE INFORMATION

Gene Name	ARHGAP15 Rho GTPase activating protein 15 [Homo sapiens]
Official Symbol	ARHGAP15
Synonyms	ARHGAP15; Rho GTPase activating protein 15; rho GTPase-activating protein 15; BM046; rho-type GTPase-activating protein 15;
Gene ID	55843
mRNA Refseq	NM_018460
Protein Refseq	NP_060930
MIM	610578
UniProt ID	Q53QZ3

 Tel: 1-631-559-9269 1-516-512-3133

 Email: info@creative-biomart.com  Fax: 1-631-938-8127

 45-1 Ramsey Road, Shirley, NY 11967, USA



12.5% SDS-PAGE Stained with Coomassie Blue.

 Tel: 1-631-559-9269 1-516-512-3133

 Email: info@creative-biomart.com  Fax: 1-631-938-8127

 45-1 Ramsey Road, Shirley, NY 11967, USA