

Recombinant Human ARHGAP25 Protein (Met1-Leu458), C-His-tagged

Cat. No. ARHGAP25-0539H Lot. No. (See product label)

SPECIFICATION

Product Overview	Recombinant human ARHGAP25 (Met1-Leu458) was fused with the C-terminal His tag and was expressed in Mammalian cells.
Species	Human
Source	Mammalian Cells
ProteinLength	Met1-Leu458
Form	Lyophilized powder/frozen liquid
Molecular Mass	50.38 kDa
Purity	>90% as determined by SDS-PAGE
Notes	For research use only.
Storage	Use a manual defrost freezer and avoid repeated freeze thaw cycles. Store at 2 to 8 centigrade for one week. Store at -20 to -80 centigrade for twelve months from the date of receipt.
Storage Buffer	Supplied as solution form in PBS or lyophilized from PBS.
Reconstitution	Reconstitute in sterile water for a stock solution.

 Tel: 1-631-559-9269 1-516-512-3133

 Email: info@creative-biomart.com  Fax: 1-631-938-8127

 45-1 Ramsey Road, Shirley, NY 11967, USA

Shipping

They are shipped out with dry ice/blue ice unless customers require otherwise.

GENE INFORMATION**Gene Name**

ARHGAP25 Rho GTPase activating protein 25 [Homo sapiens (human)]

Official Symbol

ARHGAP25

Synonyms

ARHGAP25; Rho GTPase activating protein 25; rho GTPase-activating protein 25; KIAA0053; rho-type GTPase-activating protein 25; KAIA0053;

Gene ID

9938

mRNA Refseq

NM_001007231

Protein Refseq

NP_001007232

MIM

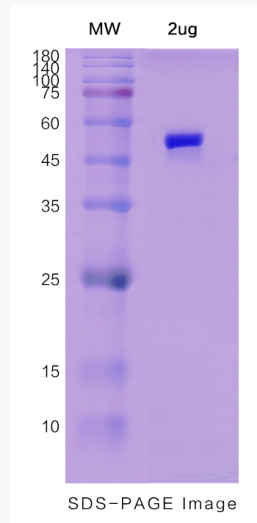
610587

UniProt ID

P42331

 Tel: 1-631-559-9269 1-516-512-3133 Email: info@creative-biomart.com  Fax: 1-631-938-8127 45-1 Ramsey Road, Shirley, NY 11967, USA

SDS-PAGE



 Tel: 1-631-559-9269 1-516-512-3133

 Email: info@creative-biomart.com  Fax: 1-631-938-8127

 45-1 Ramsey Road, Shirley, NY 11967, USA