

## Recombinant Human ARHGAP25 protein, GST-tagged

**Cat. No.** ARHGAP25-766H    **Lot. No.** (See product label)

### SPECIFICATION

<b>Product Overview</b>	Human ARHGAP25 full-length ORF ( AAH39591.1, 1 a.a. - 458 a.a.) recombinant protein with GST-tag at N-terminal.
<b>Species</b>	Human
<b>Source</b>	Wheat Germ
<b>Description</b>	ARHGAPs, such as ARHGAP25, encode negative regulators of Rho GTPases (see ARHA; MIM 165390), which are implicated in actin remodeling, cell polarity, and cell migration (Katoh and Katoh, 2004 [PubMed 15254788]).[supplied by OMIM, Mar 2008]
<b>Molecular Mass</b>	78.2 kDa
<b>AA Sequence</b>	MSLGQSACLFLSIARSRVMTGEQMAAFHPSSTPNPLERPIKMGWLKKQRSIVKNW QQRYFVLRAQQLYYYKDEEDTKPQGCMYLPGCTIKEIATNPEEAGKFVFEIIPASWD QNRMGQDSYVLMASSQAEMEEWVKFLRRVAGTPCGAVFGQRLDETVAEYEQKFGP HLPILVEKCAEFIEHGRNEEGIFRLPGQDNLVKQLRDAFDAGERPSFDRD TDVHT VASLLKLYLRDLPEPVVWSQYEGFLLCGQLTNADEAKAQQELMKQLSILPRDNYSL LSYICRFLHEIQLNCAVNKMSVDNLATVIGVNLIRSKVEDPAVIMRGTPQIQRVMTMMI RDHEVLFPKSKDIPLSPPAQKNDPKKAPVARSSVGWDATEDLRISRTDSFSSMVR REPSCFHWWLPLVQAIPCKACSRVAIWGVLGDAVAVGAAATDSSEHTLKAWPLSKS SFYWHL
<b>Applications</b>	Enzyme-linked Immunoabsorbent Assay; Western Blot (Recombinant protein);

 Tel: 1-631-559-9269    1-516-512-3133

 Email: [info@creative-biomart.com](mailto:info@creative-biomart.com)     Fax: 1-631-938-8127

 45-1 Ramsey Road, Shirley, NY 11967, USA

Antibody Production; Protein Array

<b>Notes</b>	Best use within three months from the date of receipt of this protein.
<b>Storage</b>	Store at -80 centigrade. Aliquot to avoid repeated freezing and thawing.
<b>Storage Buffer</b>	50 mM Tris-HCl, 10 mM reduced Glutathione, pH=8.0 in the elution buffer.

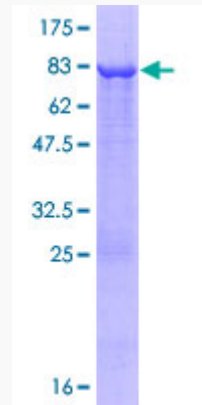
## GENE INFORMATION

<b>Gene Name</b>	ARHGAP25 Rho GTPase activating protein 25 [ Homo sapiens ]
<b>Official Symbol</b>	ARHGAP25
<b>Synonyms</b>	ARHGAP25; Rho GTPase activating protein 25; rho GTPase-activating protein 25; KIAA0053; rho-type GTPase-activating protein 25; KAIA0053;
<b>Gene ID</b>	9938
<b>mRNA Refseq</b>	NM_001007231
<b>Protein Refseq</b>	NP_001007232
<b>MIM</b>	610587
<b>UniProt ID</b>	P42331

 Tel: 1-631-559-9269 1-516-512-3133

 Email: [info@creative-biomart.com](mailto:info@creative-biomart.com)  Fax: 1-631-938-8127

 45-1 Ramsey Road, Shirley, NY 11967, USA



12.5% SDS-PAGE Stained with Coomassie Blue.

 Tel: 1-631-559-9269 1-516-512-3133

 Email: [info@creative-biomart.com](mailto:info@creative-biomart.com)  Fax: 1-631-938-8127

 45-1 Ramsey Road, Shirley, NY 11967, USA