

Recombinant Human ARHGAP29 protein, GST-tagged

Cat. No. ARHGAP29-769H **Lot. No.** (See product label)

SPECIFICATION

| | |
|-------------------------|--|
| Product Overview | Human ARHGAP29 partial ORF (AAH93767.1, 12 a.a. - 111 a.a.) recombinant protein with GST-tag at N-terminal. |
| Species | Human |
| Source | Wheat Germ |
| Description | Rap1 is a small GTPase that, through effectors, regulates Rho GTPase signaling. These effectors- Rasip1, Radil, and the protein encoded by this gene- translocate to the cell membrane, where they form a multiprotein complex. This complex is necessary for Rap1-induced inhibition of Rho signaling. Defects in this gene may be a cause of nonsyndromic cleft lip with or without cleft palate. [provided by RefSeq, Jun 2016] |
| Molecular Mass | 36.74 kDa |
| AA Sequence | KRAWASGQLSTDITSEMGLKSLSSNSIFDPDYIKELVNDIRKFSHMLLYLKEAIFSDC FKEVIHIRLEELLRVLKSIMNKHQNLNSVDLQNAAEMLTAK |
| Applications | Enzyme-linked Immunoabsorbent Assay; Western Blot (Recombinant protein); Antibody Production; Protein Array |
| Notes | Best use within three months from the date of receipt of this protein. |
| Storage | Store at -80 centigrade. Aliquot to avoid repeated freezing and thawing. |

 Tel: 1-631-559-9269 1-516-512-3133

 Email: info@creative-biomart.com  Fax: 1-631-938-8127

 45-1 Ramsey Road, Shirley, NY 11967, USA

Storage Buffer 50 mM Tris-HCl, 10 mM reduced Glutathione, pH=8.0 in the elution buffer.

GENE INFORMATION

Gene Name ARHGAP29 Rho GTPase activating protein 29 [Homo sapiens]

Official Symbol ARHGAP29

Synonyms ARHGAP29; Rho GTPase activating protein 29; rho GTPase-activating protein 29; PARG1; PTPL1-associated RhoGAP 1 (PARG1); PTPL1-associated RhoGAP protein 1; rho-type GTPase-activating protein 29; RP11-255E17.1;

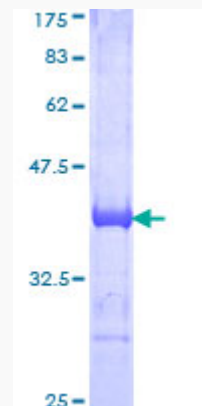
Gene ID 9411

mRNA Refseq NM_004815

Protein Refseq NP_004806

MIM 610496

UniProt ID Q52LW3



 Tel: 1-631-559-9269 1-516-512-3133

 Email: info@creative-biomart.com  Fax: 1-631-938-8127

 45-1 Ramsey Road, Shirley, NY 11967, USA



12.5% SDS-PAGE Stained with Coomassie Blue.

 Tel: 1-631-559-9269 1-516-512-3133

 Email: info@creative-biomart.com  Fax: 1-631-938-8127

 45-1 Ramsey Road, Shirley, NY 11967, USA