

## Recombinant Human ARHGEF12 protein, GST-tagged

**Cat. No.** ARHGEF12-781H    **Lot. No.** (See product label)

### SPECIFICATION

<b>Product Overview</b>	Human ARHGEF12 partial ORF ( NP_056128, 817 a.a. - 916 a.a.) recombinant protein with GST-tag at N-terminal.
<b>Species</b>	Human
<b>Source</b>	Wheat Germ
<b>Description</b>	Rho GTPases play a fundamental role in numerous cellular processes that are initiated by extracellular stimuli working through G protein-coupled receptors. The encoded protein may form a complex with G proteins and stimulate Rho-dependent signals. This protein has been observed to form a myeloid/lymphoid fusion partner in acute myeloid leukemia. Three transcript variants encoding different isoforms have been found for this gene. [provided by RefSeq, Jul 2014]
<b>Molecular Mass</b>	36.74 kDa
<b>AA Sequence</b>	VSREGILSPSELRKIFSNLEDILQLHIGLNEQMKAVRKRNETSVIDQIGEDLLTWFSGP GEEKLKHAAATFCSNQPFALMIKSRQKKDSRFQTFVQDAE
<b>Applications</b>	Enzyme-linked Immunoabsorbent Assay; Western Blot (Recombinant protein); Antibody Production; Protein Array
<b>Notes</b>	Best use within three months from the date of receipt of this protein.
<b>Storage</b>	Store at -80 centigrade. Aliquot to avoid repeated freezing and thawing.

 Tel: 1-631-559-9269    1-516-512-3133

 Email: [info@creative-biomart.com](mailto:info@creative-biomart.com)     Fax: 1-631-938-8127

 45-1 Ramsey Road, Shirley, NY 11967, USA

**Storage Buffer** 50 mM Tris-HCl, 10 mM reduced Glutathione, pH=8.0 in the elution buffer.

## GENE INFORMATION

**Gene Name** ARHGEF12 Rho guanine nucleotide exchange factor (GEF) 12 [ Homo sapiens ]

**Official Symbol** ARHGEF12

**Synonyms** ARHGEF12; Rho guanine nucleotide exchange factor (GEF) 12; rho guanine nucleotide exchange factor 12; KIAA0382; LARG; leukemia-associated RhoGEF; leukemia-associated rho guanine nucleotide exchange factor; PRO2792; DKFZp686O2372;

**Gene ID** 23365

**mRNA Refseq** NM\_001198665

**Protein Refseq** NP\_001185594

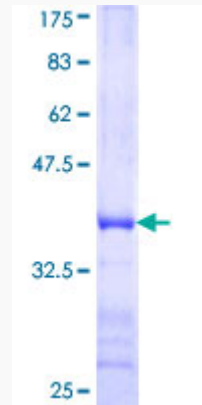
**MIM** 604763

**UniProt ID** Q9NZN5

 Tel: 1-631-559-9269 1-516-512-3133

 Email: [info@creative-biomart.com](mailto:info@creative-biomart.com)  Fax: 1-631-938-8127

 45-1 Ramsey Road, Shirley, NY 11967, USA



12.5% SDS-PAGE Stained with Coomassie Blue.

 Tel: 1-631-559-9269 1-516-512-3133

 Email: [info@creative-biomart.com](mailto:info@creative-biomart.com)  Fax: 1-631-938-8127

 45-1 Ramsey Road, Shirley, NY 11967, USA