

Recombinant Human ARHGEF3 protein, GST-tagged

Cat. No. ARHGEF3-786H Lot. No. (See product label)

SPECIFICATION

Product Overview	Human ARHGEF3 full-length ORF (AAH99715.1, 1 a.a. - 324 a.a.) recombinant protein with GST-tag at N-terminal.
Species	Human
Source	Wheat Germ
Description	Rho-like GTPases are involved in a variety of cellular processes, and they are activated by binding GTP and inactivated by conversion of GTP to GDP by their intrinsic GTPase activity. Guanine nucleotide exchange factors (GEFs) accelerate the GTPase activity of Rho GTPases by catalyzing their release of bound GDP. This gene encodes a guanine nucleotide exchange factor, which specifically activates two members of the Rho GTPase family: RHOA and RHOB, both of which have a role in bone cell biology. It has been identified that genetic variation in this gene plays a role in the determination of bone mineral density (BMD), indicating the implication of this gene in postmenopausal osteoporosis. Alternatively spliced transcript variants encoding different isoforms have been found for this gene. [provided by RefSeq, Jul 2008]
Molecular Mass	63.4 kDa
AA Sequence	MKLPCLSSYDSYCSNQVAAKALLDHKKQDHRVQDFLQRCLESPFSRKLDLWNFLDI PRSRLVKYPDLLREILRHTPNPNPDQQHLEEAIIQIGIVAEINTKTGESECRYKERRLL YLEEGQKDSLIDSSRVVCCCHGELKNNRGVKLHVFLFQEVLVITRAVTHNEQLCYQLY

 Tel: 1-631-559-9269 1-516-512-3133

 Email: info@creative-biomart.com  Fax: 1-631-938-8127

 45-1 Ramsey Road, Shirley, NY 11967, USA

RQPIPVKDLLLEDLQDGEVRLGGSLRGAFSNNERIKNFFRVSFKNGSQSQTHSLQA
 NDTFNKQQWLN CIRQAKETVLCAAGQAGVLDSEGSFLNPTTGSRELQGETKLEQM
 DQSDSESDCSMDTSEVSLDCERMEQTDSSCGNSRHGESNV

Applications

Enzyme-linked Immunoabsorbent Assay; Western Blot (Recombinant protein);
 Antibody Production; Protein Array

Notes

Best use within three months from the date of receipt of this protein.

Storage

Store at -80 centigrade. Aliquot to avoid repeated freezing and thawing.

Storage Buffer

50 mM Tris-HCl, 10 mM reduced Glutathione, pH=8.0 in the elution buffer.

GENE INFORMATION

Gene Name

[ARHGEF3 Rho guanine nucleotide exchange factor \(GEF\) 3 \[Homo sapiens \]](#)

Official Symbol

[ARHGEF3](#)

Synonyms

ARHGEF3; Rho guanine nucleotide exchange factor (GEF) 3; rho guanine nucleotide exchange factor 3; DKFZP434F2429; exchange factor found in platelets and leukemic and neuronal tissues; XPLN; GEF3; RhoGEF protein; STA3; 59.8 kDA protein; exchange factor found in platelets and leukemic and neuronal tissues, XPLN; FLJ98126; MGC118905; DKFZp434F2429;

Gene ID

[50650](#)

mRNA Refseq

[NM_001128615](#)

Protein Refseq

[NP_001122087](#)

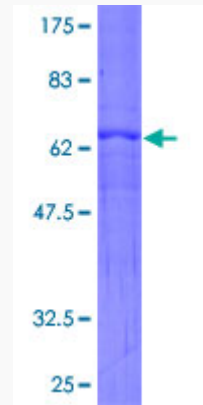
 Tel: 1-631-559-9269 1-516-512-3133

 Email: info@creative-biomart.com  Fax: 1-631-938-8127

 45-1 Ramsey Road, Shirley, NY 11967, USA

MIM 612115

UniProt ID Q9NR81



12.5% SDS-PAGE Stained with Coomassie Blue.

Tel: 1-631-559-9269 1-516-512-3133

Email: info@creative-biomart.com Fax: 1-631-938-8127

45-1 Ramsey Road, Shirley, NY 11967, USA