

Recombinant Human ARHGEF39 Protein, GST-Tagged

Cat. No. ARHGEF39-0176H Lot. No. (See product label)

SPECIFICATION

Product Overview	Human C9orf100 full-length ORF (AAH33666, 1 a.a. - 335 a.a.) recombinant protein with GST-tag at N-terminal.
Species	Human
Source	Wheat Germ
Description	ARHGEF39 (Rho Guanine Nucleotide Exchange Factor 39) is a Protein Coding gene. Among its related pathways are p75 NTR receptor-mediated signalling and Signaling by GPCR. GO annotations related to this gene include Rho guanyl-nucleotide exchange factor activity.
Molecular Mass	62.59 kDa
AA Sequence	MELSCPGSRCPVQEQRARWERKRACTARELLETERRYQEQLGLVATYFLGILKAKG TLRPPERQALFGSWELIYGASQELLPYLEGGCWGQGLEGFCRHLELYNQFAANSER SQTTLQEQLKKNKGFRRFVRLQEGRPEFGGLQLQDLLPLPLQRLQQYENLVVALAE NTGPNSPDHQQLTRAARLISETAQRVHTIGQKQKNDQHLRRVQALLSGRQAKGLTS GRWFLRQGWLLVPPHGEPRPRMFFLFTDVLLMAKPRPPLHLLRSGTFACKALYPM AQCHLSRVFGHSGGPCGGLLSLSPHEKLLLMSTDQEELSRWYHSLTWAISSQKN
Applications	Enzyme-linked Immunoabsorbent Assay Western Blot (Recombinant protein) Antibody Production Protein Array

 Tel: 1-631-559-9269 1-516-512-3133

 Email: info@creative-biomart.com  Fax: 1-631-938-8127

 45-1 Ramsey Road, Shirley, NY 11967, USA

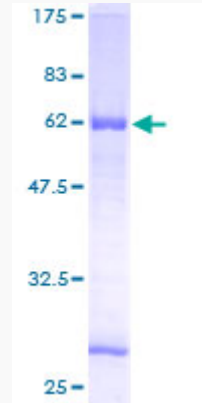
Notes	Best use within three months from the date of receipt of this protein.
Storage	Store at -80 centigrade. Aliquot to avoid repeated freezing and thawing.
Storage Buffer	50 mM Tris-HCl, 10 mM reduced Glutathione, pH=8.0 in the elution buffer.
GENE INFORMATION	
Gene Name	ARHGEF39 Rho guanine nucleotide exchange factor 39 [Homo sapiens (human)]
Official Symbol	ARHGEF39
Synonyms	ARHGEF39 Rho guanine nucleotide exchange factor 39; C9ORF100; chromosome 9 open reading frame 100; vav-like protein C9orf100; FLJ14642; RP11-331F9.7; MGC44886;
Gene ID	84904
mRNA Refseq	NM_032818
Protein Refseq	NP_116207
UniProt ID	Q8N4T4

 Tel: 1-631-559-9269 1-516-512-3133

 Email: info@creative-biomart.com  Fax: 1-631-938-8127

 45-1 Ramsey Road, Shirley, NY 11967, USA

**Quality Control
Testing**



12.5% SDS-PAGE Stained with Coomassie Blue.

 Tel: 1-631-559-9269 1-516-512-3133

 Email: info@creative-biomart.com  Fax: 1-631-938-8127

 45-1 Ramsey Road, Shirley, NY 11967, USA