

# Recombinant Human ARHGEF39 Protein, Myc/DDK-tagged, C13 and N15-labeled

**Cat. No.** ARHGEF39-1167H    **Lot. No.** (See product label)

## SPECIFICATION

### Product Overview

C9orf100 MS Standard C13 and N15-labeled recombinant protein (NP\_116207) with a C-terminal MYC/DDK tag, was expressed in HEK293 cells.

### Species

Human

### Source

HEK293

### Description

ARHGEF39 (Rho Guanine Nucleotide Exchange Factor 39) is a Protein Coding gene. Diseases associated with ARHGEF39 include Bartter Syndrome, Type 1, Antenatal and Hepatocellular Carcinoma. Among its related pathways are Signaling by GPCR and p75 NTR receptor-mediated signalling. Gene Ontology (GO) annotations related to this gene include Rho guanyl-nucleotide exchange factor activity. An important paralog of this gene is ECT2L.

### Molecular Mass

38.3 kDa

### AA Sequence

MELSCPGSRCPVQEQRARWERKRACTARELLETERRYQEQLGLVATYFLGILKAKG  
TLRPPERQALFGSWELIYGASQELLPYLEGGCWGGQGLEGFCRHLELYNQFAANSER  
SQTTLQEQLKKNKGFRRFVRLQEGRPEFGGLQLQDLLPLPLQRLQQYENLVVALAE  
NTGPNSPD HQQLTRAARLISETAQRVHTIGQKQKNDQHLRRVQALLSGRQAKGLTS  
GRWFLRQGWLLVPPHGEPRPRMFFLFTDVLLMAKPRPPLHLLRSGTFACKALYPM  
AQCHLSRVFGHSGGPCGGLLSLSPHEKLLLMSTDQEELSRWYHSLTWAISSQKNT  
RTRPLEQKLISEEDLAANDILDYKDDDDKV

 Tel: 1-631-559-9269    1-516-512-3133

 Email: [info@creative-biomart.com](mailto:info@creative-biomart.com)     Fax: 1-631-938-8127

 45-1 Ramsey Road, Shirley, NY 11967, USA

<b>Purity</b>	> 80% as determined by SDS-PAGE and Coomassie blue staining
<b>Stability</b>	Stable for 3 months from receipt of products under proper storage and handling conditions.
<b>Storage</b>	Store at -80 centigrade. Avoid repeated freeze-thaw cycles.
<b>Concentration</b>	50 µg/mL as determined by BCA
<b>Storage Buffer</b>	100 mM glycine, 25 mM Tris-HCl, pH 7.3.

## GENE INFORMATION

<b>Gene Name</b>	ARHGEF39 Rho guanine nucleotide exchange factor 39 [ Homo sapiens (human) ]
<b>Official Symbol</b>	ARHGEF39
<b>Synonyms</b>	ARHGEF39; Rho guanine nucleotide exchange factor 39; C9orf100; rho guanine nucleotide exchange factor 39; Rho guanine nucleotide exchange factor (GEF) 39; vav-like protein C9orf100
<b>Gene ID</b>	84904
<b>mRNA Refseq</b>	NM_032818
<b>Protein Refseq</b>	NP_116207
<b>UniProt ID</b>	Q8N4T4

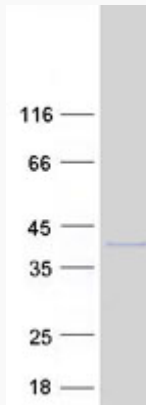
 Tel: 1-631-559-9269 1-516-512-3133

 Email: [info@creative-biomart.com](mailto:info@creative-biomart.com)  Fax: 1-631-938-8127

 45-1 Ramsey Road, Shirley, NY 11967, USA



**SDS-PAGE**



☎ Tel: 1-631-559-9269 1-516-512-3133

☎ Email: [info@creative-biomart.com](mailto:info@creative-biomart.com) ☎ Fax: 1-631-938-8127

☎ 45-1 Ramsey Road, Shirley, NY 11967, USA