

# Recombinant Human ARHGEF7 Protein, Myc/DDK-tagged, C13 and N15-labeled

**Cat. No.** ARHGEF7-2829H    **Lot. No.** (See product label)

## SPECIFICATION

### Product Overview

ARHGEF7 MS Standard C13 and N15-labeled recombinant protein (NP\_663788) with a C-terminal MYC/DDK tag, was expressed in HEK293 cells.

### Species

Human

### Source

HEK293

### Description

This gene encodes a protein that belongs to a family of cytoplasmic proteins that activate the Ras-like family of Rho proteins by exchanging bound GDP for GTP. It forms a complex with the small GTP binding protein Rac1 and recruits Rac1 to membrane ruffles and to focal adhesions. Multiple alternatively spliced transcript variants encoding different isoforms have been observed for this gene.

### Molecular Mass

87.6 kDa

### AA Sequence

MNSAEQTVTWLITLGVLESPKKTISDPEGFLQASLKDGVVLCRLLERLLPGTIEKVYP  
 EPRSESECLSNIREFLRGCGASLRLETFDANDLYQGQNFNKVLSSLVTLNKVTADIGL  
 GSDSVCARPSSHRIKSFDSLGSQSLHTRTSKLFQGGQYRSLDMDTNSNNQLVVRAKF  
 NFQQTNEDELSFSKGDVIHVTRVEEGWWEGTLNGRTGWFPSNYVREVKASEKPV  
 SPKSGTLKSPKGFDTTAINKSYYNVVLQNILETENEYSKELQTVLSTYLRLPLQTSEK  
 LSSANISYLMGNLEEICSFQQMLVQSLEECTKLPEAQQRVGGCFLNLMQMKTLYLT  
 YCANHPSAVNVLTEHSEELGEFMETKGASSPGILVLTGLSKPFMRDLKDYPTLLKEL  
 ERHMEDYHTDRQDIQKSMAAFKNLSAQCQEVRRKRKELELQILTEAIRNWEGDDIKTL

 Tel: 1-631-559-9269    1-516-512-3133

 Email: [info@creative-biomart.com](mailto:info@creative-biomart.com)     Fax: 1-631-938-8127

 45-1 Ramsey Road, Shirley, NY 11967, USA

GNVTYMSQVLIQCAGSEEKNERYLLLFPNVLLMLSASPRMSGFIYQGKLPPTGMTIT  
 KLEDSENHRNAFEISGSMIERILVSCNNQQDLQEWVEHLQKQTKVTSVGNPTIKPHS  
 VPSHTLPSPVTPSSKHADSKPAPLTPAYHTLPHPSHHGTPHTTINWGPLEPPKTPK  
 PWSLSCLRPAPPLRPSAALCYKEDLSKSPKTMKLLPKRKPERKPSDEEFASRKSTA  
 ALEEDAQILKVIEAYCTSAKTRQTLNSTWQGTDLMHNHVLADDDQPSLDSLGRSSL  
 SRLEPSDLSSESDYDSIWTAAHSYRMGSTSRKSCCSYISHQNTRTRPLEQKLISEEDL  
 AANDILDYKDDDDKV

**Purity** > 80% as determined by SDS-PAGE and Coomassie blue staining

**Stability** Stable for 3 months from receipt of products under proper storage and handling conditions.

**Storage** Store at -80 centigrade. Avoid repeated freeze-thaw cycles.

**Concentration** 50 µg/mL as determined by BCA

**Storage Buffer** 100 mM glycine, 25 mM Tris-HCl, pH 7.3.

## GENE INFORMATION

**Gene Name** [ARHGEF7 Rho guanine nucleotide exchange factor 7 \[ Homo sapiens \(human\) \]](#)

**Official Symbol** [ARHGEF7](#)

**Synonyms**

ARHGEF7; Rho guanine nucleotide exchange factor (GEF) 7; rho guanine nucleotide exchange factor 7; BETA PIX; COOL1; DKFZp686C12170; DKFZp761K1021; guanine nucleotide exchange factor 7; KIAA0142; Nbla10314; P50; P50BP; P85; P85COOL1; P85SPR; PAK interacting exchange factor beta; PAK3; PIXB; rho; SH3 domain containing proline rich protein; PAK-interacting exchange factor beta; SH3 domain-containing proline-rich protein; COOL-1; BETA-PIX;

 Tel: 1-631-559-9269 1-516-512-3133

 Email: [info@creative-biomart.com](mailto:info@creative-biomart.com)  Fax: 1-631-938-8127

 45-1 Ramsey Road, Shirley, NY 11967, USA

Gene ID 8874

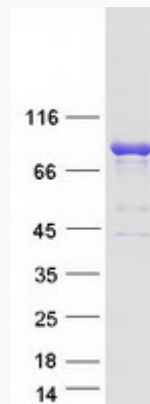
mRNA Refseq NM\_145735

Protein Refseq NP\_663788

MIM 605477

UniProt ID Q14155

SDS-PAGE



Tel: 1-631-559-9269 1-516-512-3133

Email: [info@creative-biomart.com](mailto:info@creative-biomart.com) Fax: 1-631-938-8127

45-1 Ramsey Road, Shirley, NY 11967, USA