

Recombinant Full Length Human ARHGEF9 Protein, Flag tagged

Cat. No. ARHGEF9-12HFL **Lot. No.** (See product label)

SPECIFICATION

Product Overview	Recombinant protein of human Cdc42 guanine nucleotide exchange factor (GEF) 9 (ARHGEF9) with Flag tag was expressed in HEK293T.
Species	Human
Source	HEK293T
ProteinLength	1-516 aa
Description	The protein encoded by this gene is a Rho-like GTPase that switches between the active (GTP-bound) state and inactive (GDP-bound) state to regulate CDC42 and other genes. This brain-specific protein also acts as an adaptor protein for the recruitment of gephyrin and together these proteins facilitate receptor recruitment in GABAergic and glycinergic synapses. Defects in this gene are the cause of startle disease with epilepsy (STHEE), also known as hyperekplexia with epilepsy, as well as several other types of cognitive disability. Multiple transcript variants encoding different isoforms have been found for this gene.
AASequence	MTLLITGDSIVSAEAVWDHVTMANRELAFKAGDVIKVLDA SNKDWVWGQIDDEEGW FPASFVRLWVNQEDEVVEEGPSDVQNGHLDPNSDCLCLGRPLQNRDQMRANVINEI MSTERHYIKHLKDICEGYLKQCRKRRDMFSDEQLKVIFGNIEDIYRFQMGMFVRDLEK QYNNDPHLSEIGPCFLEHQDGFWIYSEYCNNHLDACMELSKLMKDSRYQHFFFEAC RLLQQMIDIAIDGFLTLVQKICKYPLQLAELLKYTAQDHSYRYVAAALAVMRNVTQ

 Tel: 1-631-559-9269 1-516-512-3133

 Email: info@creative-biomart.com  Fax: 1-631-938-8127

 45-1 Ramsey Road, Shirley, NY 11967, USA



QINERKRRLENIDKIAQWQASVLDWEGEDILDRSSELIYTGEMAWIYQPYGRNQQRV
FFLFDHQMVLCKKDLIRRDILYYKGRIDMDKYEVVDIEDGRDDDFNVSMKNAFKLHN
KETEEIHLFFAKKLEEKIRWLRAFREERKMVQEDEKIGFEISENQKRQAAMTVRKVPK
QKGVNSARVPPSYPPPQDPLNHGQYLVPDGLAQSQVFEFTEPKRSQSPFWQNF
RLTPFKTRTRPLEQKLISEEDLAANDILDYKDDDDKV

Molecular Mass 60.8 kDa

Purity > 80% as determined by SDS-PAGE and Coomassie blue staining

Note For testing in cell culture applications, please filter before use. Note that you may experience some loss of protein during the filtration process.

Stability Stable for 12 months from the date of receipt of the product under proper storage and handling conditions. Avoid repeated freeze-thaw cycles.

Storage Store at -80 centigrade.

Storage Buffer 25 mM Tris-HCl, 100 mM glycine, pH 7.3, 10% glycerol

Concentration > 0.05 µg/µL as determined by microplate BCA method

Shipping Dry Ice

GENE INFORMATION

Gene ID 23229

Gene Name ARHGEF9 Cdc42 guanine nucleotide exchange factor (GEF) 9 [Homo sapiens (human)]

Tel: 1-631-559-9269 1-516-512-3133

Email: info@creative-biomart.com Fax: 1-631-938-8127

45-1 Ramsey Road, Shirley, NY 11967, USA

Official Symbol	23229
Synonyms	ARHGEF9; Cdc42 guanine nucleotide exchange factor (GEF) 9; rho guanine nucleotide exchange factor 9; collybistin; KIAA0424; PEM 2; PEM-2 homolog; hPEM-2 collybistin; rac/Cdc42 guanine nucleotide exchange factor 9; PEM2; EIEE8; PEM-2; HPEM-2; COLLYBISTIN;
mRNA Refseq	NM_015185
Official Symbol 2	ARHGEF9
Gene ID 2	23229
Gene Name 2	ARHGEF9 Cdc42 guanine nucleotide exchange factor (GEF) 9 [Homo sapiens (human)]
mRNA Refseq 2	NM_015185
Protein Refseq 2	NP_056000
MIM 2	300429
UniProt ID 2	O43307

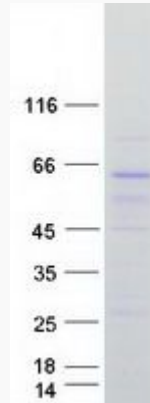
 Tel: 1-631-559-9269 1-516-512-3133

 Email: info@creative-biomart.com  Fax: 1-631-938-8127

 45-1 Ramsey Road, Shirley, NY 11967, USA



SDS-PAGE



Tel: 1-631-559-9269 1-516-512-3133

Email: info@creative-biomart.com Fax: 1-631-938-8127

45-1 Ramsey Road, Shirley, NY 11967, USA