

# Recombinant Human ARHGEF9 Protein, Myc/DDK-tagged, C13 and N15-labeled

**Cat. No.** ARHGEF9-3761H    **Lot. No.** (See product label)

## SPECIFICATION

<b>Product Overview</b>	ARHGEF9 MS Standard C13 and N15-labeled recombinant protein (NP_056000) with a C-terminal MYC/DDK tag, was expressed in HEK293 cells.
<b>Species</b>	Human
<b>Source</b>	HEK293
<b>Description</b>	The protein encoded by this gene is a Rho-like GTPase that switches between the active (GTP-bound) state and inactive (GDP-bound) state to regulate CDC42 and other genes. This brain-specific protein also acts as an adaptor protein for the recruitment of gephyrin and together these proteins facilitate receptor recruitment in GABAergic and glycinergic synapses. Defects in this gene are the cause of startle disease with epilepsy (STHEE), also known as hyperekplexia with epilepsy, as well as several other types of cognitive disability. Multiple transcript variants encoding different isoforms have been found for this gene.
<b>Molecular Mass</b>	60.8 kDa
<b>AA Sequence</b>	MTLLITGDSIVSAEAVWDHVTMANRELAFKAGDVIKVLDA SNKDWVWGQIDDEEGW FPASFVRLWVNQEDEVVEEGPSDVQNGHLDPNSDCLCLGRPLQNRDQMRANVINEI MSTERHYIKHLKDICEGYLKQCRKRRDMFSDEQLKVIFGNIEDIYRFQMGFVRDLEK QYNNDDPHLSEIGPCFLEHQDGFWIYSEYCNNHLDACMELSKLMKDSRYQHFFFEAC RLLQQMIDIAIDGFLTLVQKICKYPLQLAELLKYTAQDHSYRYVAAALAVMRNVTQ

 Tel: 1-631-559-9269    1-516-512-3133

 Email: [info@creative-biomart.com](mailto:info@creative-biomart.com)     Fax: 1-631-938-8127

 45-1 Ramsey Road, Shirley, NY 11967, USA

QINERKRRLENIDKIAQWQASVLDWEGEDILDRSSELIYTGEMAWIYQPYGRNQQRV  
 FFLFDHQMVLCCKDLIRRDILYYKGRIDMDKYEVVDIEDGRDDDFNVSMKNAFKLHN  
 KETEEIHLFFAKKLEEKIRWLRAFREERKMVQEDEKIGFEISENQKRQAAMTVRKVPK  
 QKGVNSARVPPSYPPPQDPLNHGQYLVPDZIAQSQVFEFTEPKRSQSPFWQNF  
 RLTPFKTRTRPLEQKLISEEDLAANDILDYKDDDDKV

**Purity** > 80% as determined by SDS-PAGE and Coomassie blue staining

**Stability** Stable for 3 months from receipt of products under proper storage and handling conditions.

**Storage** Store at -80 centigrade. Avoid repeated freeze-thaw cycles.

**Concentration** 50 µg/mL as determined by BCA

**Storage Buffer** 100 mM glycine, 25 mM Tris-HCl, pH 7.3.

## GENE INFORMATION

**Gene Name** [ARHGEF9 Cdc42 guanine nucleotide exchange factor 9 \[ Homo sapiens \(human\) \]](#)

**Official Symbol** [ARHGEF9](#)

**Synonyms** ARHGEF9; Cdc42 guanine nucleotide exchange factor (GEF) 9; rho guanine nucleotide exchange factor 9; collybistin; KIAA0424; PEM 2; PEM-2 homolog; hPEM-2 collybistin; rac/Cdc42 guanine nucleotide exchange factor 9; PEM2; EIEE8; PEM-2; HPEM-2; COLLYBISTIN;

**Gene ID** [23229](#)

**mRNA Refseq** [NM\\_015185](#)

 Tel: 1-631-559-9269 1-516-512-3133

 Email: [info@creative-biomart.com](mailto:info@creative-biomart.com)  Fax: 1-631-938-8127

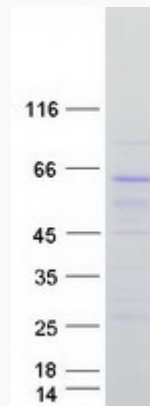
 45-1 Ramsey Road, Shirley, NY 11967, USA

**Protein Refseq** NP\_056000

**MIM** 300429

**UniProt ID** O43307

**SDS-PAGE**



 Tel: 1-631-559-9269 1-516-512-3133

 Email: [info@creative-biomart.com](mailto:info@creative-biomart.com)  Fax: 1-631-938-8127

 45-1 Ramsey Road, Shirley, NY 11967, USA