

## Recombinant Human ARID1A protein, GST-tagged

**Cat. No.** ARID1A-792H    **Lot. No.** (See product label)

### SPECIFICATION

<b>Product Overview</b>	Human ARID1A partial ORF ( NP_006006, 1216 a.a. - 1325 a.a.) recombinant protein with GST-tag at N-terminal.
<b>Species</b>	Human
<b>Source</b>	Wheat Germ
<b>Description</b>	<p>This gene encodes a member of the SWI/SNF family, whose members have helicase and ATPase activities and are thought to regulate transcription of certain genes by altering the chromatin structure around those genes. The encoded protein is part of the large ATP-dependent chromatin remodeling complex SNF/SWI, which is required for transcriptional activation of genes normally repressed by chromatin. It possesses at least two conserved domains that could be important for its function. First, it has a DNA-binding domain that can specifically bind an AT-rich DNA sequence known to be recognized by a SNF/SWI complex at the beta-globin locus. Second, the C-terminus of the protein can stimulate glucocorticoid receptor-dependent transcriptional activation. It is thought that the protein encoded by this gene confers specificity to the SNF/SWI complex and may recruit the complex to its targets through either protein-DNA or protein-protein interactions. Two transcript variants encoding different isoforms have been found for this gene. [provided by RefSeq, Jul 2008]</p>
<b>Molecular Mass</b>	37.84 kDa
<b>AA Sequence</b>	NTSDMMGRMSYEPNKDPYGSMRKAPGSDPFMSSGQGPNGGMGDPYSRAAGPGL

 Tel: 1-631-559-9269    1-516-512-3133

 Email: [info@creative-biomart.com](mailto:info@creative-biomart.com)     Fax: 1-631-938-8127

 45-1 Ramsey Road, Shirley, NY 11967, USA

GNVAMGPRQHYPYGGPYDRVRTEPGIGPEGNMSTGAPQPNLMPSNPDSGMYS  
RYP

**Applications**

Enzyme-linked Immunoabsorbent Assay; Western Blot (Recombinant protein);  
Antibody Production; Protein Array

**Notes**

Best use within three months from the date of receipt of this protein.

**Storage**

Store at -80 centigrade. Aliquot to avoid repeated freezing and thawing.

**Storage Buffer**

50 mM Tris-HCl, 10 mM reduced Glutathione, pH=8.0 in the elution buffer.

## GENE INFORMATION

**Gene Name**

ARID1A AT rich interactive domain 1A (SWI-like) [ Homo sapiens ]

**Official Symbol**

ARID1A

**Synonyms**

ARID1A; AT rich interactive domain 1A (SWI-like); AT rich interactive domain 1A (SWI like) , C1orf4, SMARCF1, SWI/SNF related, matrix associated, actin dependent regulator of chromatin, subfamily f, member 1; AT-rich interactive domain-containing protein 1A; B120; BAF250; BAF250a; C1orf4; P270; osa homolog 1; SWI-like protein; brain protein 120; OSA1 nuclear protein; BRG1-associated factor 250a; SWI/SNF complex protein p270; chromatin remodeling factor p250; ARID domain-containing protein 1A; SWI/SNF-related, matrix-associated, actin-dependent regulator of chromatin subfamily F member 1; ELD; OSA1; hELD; BM029; hOSA1; C1orf4; SMARCF1;

**Gene ID**

8289

**mRNA Refseq**

NM\_006015

 Tel: 1-631-559-9269 1-516-512-3133

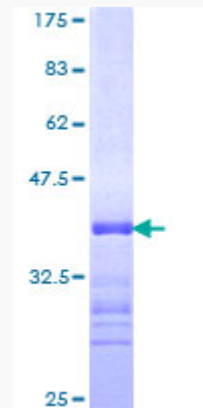
 Email: [info@creative-biomart.com](mailto:info@creative-biomart.com)  Fax: 1-631-938-8127

 45-1 Ramsey Road, Shirley, NY 11967, USA

**Protein Refseq** NP\_006006

**MIM** 603024

**UniProt ID** O14497



12.5% SDS-PAGE Stained with Coomassie Blue.

 Tel: 1-631-559-9269 1-516-512-3133

 Email: [info@creative-biomart.com](mailto:info@creative-biomart.com)  Fax: 1-631-938-8127

 45-1 Ramsey Road, Shirley, NY 11967, USA