

# Recombinant Human ARL10 Protein, Myc/DDK-tagged, C13 and N15-labeled

**Cat. No.** ARL10-2480H    **Lot. No.** (See product label)

## SPECIFICATION

<b>Product Overview</b>	ARL10 MS Standard C13 and N15-labeled recombinant protein (NP_775935) with a C-terminal MYC/DDK tag, was expressed in HEK293 cells.
<b>Species</b>	Human
<b>Source</b>	HEK293
<b>Description</b>	ARL10 (ADP Ribosylation Factor Like GTPase 10) is a Protein Coding gene. Diseases associated with ARL10 include Martsof Syndrome. Gene Ontology (GO) annotations related to this gene include GTP binding. An important paralog of this gene is ARL9.
<b>Molecular Mass</b>	27.3 kDa
<b>AA Sequence</b>	MAPRPLGPLV LALGGAAVLG SVLFILWKTYFGRGRERRWDRGEAWWGAEARLP EWDEWDPEDEEDEEPAL EEELEQREVLV LGLDGAGKSTFLRVLSGKPPLEGHIPTWG FNSVRLPTKDFEVDLLEIGGSQNLRFYWKEFVSEVDLVFVVD SADRRLRPWARQE LHKLLDKDPDLPVVVANKQDLSEAMSMGELQRELGLQAIDNQREVFLLAASIAPAG PTFEETPGTVHIWKLLLELLSTRTRPLEQKLISEEDLAANDILDYKDDDDKV
<b>Purity</b>	> 80% as determined by SDS-PAGE and Coomassie blue staining
<b>Stability</b>	Stable for 3 months from receipt of products under proper storage and handling conditions.

 Tel: 1-631-559-9269    1-516-512-3133

 Email: [info@creative-biomart.com](mailto:info@creative-biomart.com)     Fax: 1-631-938-8127

 45-1 Ramsey Road, Shirley, NY 11967, USA

<b>Storage</b>	Store at -80 centigrade. Avoid repeated freeze-thaw cycles.
----------------	---

<b>Concentration</b>	50 µg/mL as determined by BCA
----------------------	-------------------------------

<b>Storage Buffer</b>	100 mM glycine, 25 mM Tris-HCl, pH 7.3.
-----------------------	---

## GENE INFORMATION

<b>Gene Name</b>	ARL10 ADP-ribosylation factor-like 10 [ Homo sapiens (human) ]
------------------	--

<b>Official Symbol</b>	ARL10
------------------------	-------

<b>Synonyms</b>	ARL10; ADP-ribosylation factor-like 10; ADP ribosylation factor like 10A, ARL10A; ADP-ribosylation factor-like protein 10; ADP-ribosylation factor-like 10A; ADP-ribosylation factor-like membrane-associated protein; ARL10A; FLJ39249;
-----------------	--

<b>Gene ID</b>	285598
----------------	--------

<b>mRNA Refseq</b>	NM_173664
--------------------	-----------

<b>Protein Refseq</b>	NP_775935
-----------------------	-----------

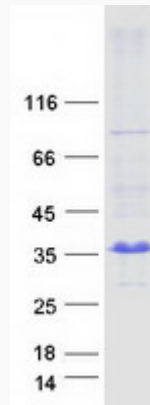
<b>UniProt ID</b>	Q8N8L6
-------------------	--------

 Tel: 1-631-559-9269 1-516-512-3133

 Email: [info@creative-biomart.com](mailto:info@creative-biomart.com)  Fax: 1-631-938-8127

 45-1 Ramsey Road, Shirley, NY 11967, USA

**SDS-PAGE**



 Tel: 1-631-559-9269 1-516-512-3133

 Email: [info@creative-biomart.com](mailto:info@creative-biomart.com)  Fax: 1-631-938-8127

 45-1 Ramsey Road, Shirley, NY 11967, USA