

## Recombinant Human ARL11 protein, GST-tagged

**Cat. No.** ARL11-804H    **Lot. No.** (See product label)

### SPECIFICATION

<b>Product Overview</b>	Human ARL11 full-length ORF ( NP_612459.1, 1 a.a. - 196 a.a.) recombinant protein with GST-tag at N-terminal.
<b>Species</b>	Human
<b>Source</b>	Wheat Germ
<b>Description</b>	This gene encodes a tumor suppressor related to the ADP-ribosylation factor (ARF) family of proteins. The encoded protein may play a role in apoptosis in a caspase-dependent manner. Polymorphisms in this gene have been associated with some familial cancers. [provided by RefSeq, May 2010]
<b>Molecular Mass</b>	47.8 kDa
<b>AA Sequence</b>	MGSVNSRGHKAEAQVMMGLDSAGKTTLLYKLGKQHQLVETLPTVGFNVEPLKAPG HVSLTLWDVGGQAPLRASWKDYLEGTDILVYVLDSTDEARLPESAAELTEVLNDPN MAGVPFLVLANKQEAPDALPLLKIRNRLSLERFQDHCWELRGCSALTGEGLPALQ SLWSLLKSRSCMCLQARAHGAERGDSKRS
<b>Applications</b>	Enzyme-linked Immunoabsorbent Assay; Western Blot (Recombinant protein); Antibody Production; Protein Array
<b>Notes</b>	Best use within three months from the date of receipt of this protein.
<b>Storage</b>	Store at -80 centigrade. Aliquot to avoid repeated freezing and thawing.

 Tel: 1-631-559-9269    1-516-512-3133

 Email: [info@creative-biomart.com](mailto:info@creative-biomart.com)     Fax: 1-631-938-8127

 45-1 Ramsey Road, Shirley, NY 11967, USA

**Storage Buffer** 50 mM Tris-HCl, 10 mM reduced Glutathione, pH=8.0 in the elution buffer.

## GENE INFORMATION

**Gene Name** [ARL11 ADP-ribosylation factor-like 11 \[ Homo sapiens \]](#)

**Official Symbol** [ARL11](#)

**Synonyms** ARL11; ADP-ribosylation factor-like 11; ADP-ribosylation factor-like protein 11; ARLTS1; FLJ33930; ADP-ribosylation factor-like tumor suppressor protein 1; MGC17429;

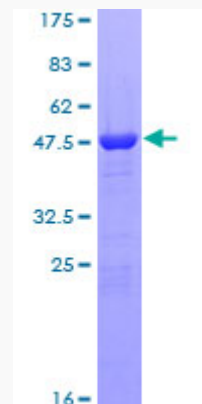
**Gene ID** [115761](#)

**mRNA Refseq** [NM\\_138450](#)

**Protein Refseq** [NP\\_612459](#)

**MIM** [609351](#)

**UniProt ID** [Q969Q4](#)



 Tel: 1-631-559-9269 1-516-512-3133

 Email: [info@creative-biomart.com](mailto:info@creative-biomart.com)  Fax: 1-631-938-8127

 45-1 Ramsey Road, Shirley, NY 11967, USA



12.5% SDS-PAGE Stained with Coomassie Blue.

 Tel: 1-631-559-9269 1-516-512-3133

 Email: [info@creative-biomart.com](mailto:info@creative-biomart.com)  Fax: 1-631-938-8127

 45-1 Ramsey Road, Shirley, NY 11967, USA