

Recombinant Human ARL14EP Protein, Myc/DDK-tagged, C13 and N15-labeled

Cat. No. ARL14EP-6339H **Lot. No.** (See product label)

SPECIFICATION

Product Overview

C11orf46 MS Standard C13 and N15-labeled recombinant protein (NP_689529) with a C-terminal MYC/DDK tag, was expressed in HEK293 cells.

Species

Human

Source

HEK293

Description

The protein encoded by this gene is an effector protein. It interacts with ADP-ribosylation factor-like 14 [ARL14, also known as ADP-ribosylation factor 7 (ARF7)], beta-actin (ACTB) and actin-based motor protein myosin 1E (MYO1E). ARL14 is a small GTPase; it controls the export of major histocompatibility class II molecules by connecting to the actin network via this effector protein.

Molecular Mass

29.3 kDa

AA Sequence

MMDPCSVGVQLRRTTNECHKTYTRHTGFKTLQELSSNDMLLLQLRTGMTLSGNNTI
CFHHVKIYIDRFEDLQKSCCDPFNIHKKLAKKNLHVIDLDDATFLSAKFGRQLVPGWK
LCPKCTQIINGSVDVDTEDRQKRKPESDGRTAKALRSLQFTNPGRQTEFAPETGKR
EKRRLLTKNATAGSDRQVIPAKSKVYDSQGLLIFSGMDLCDCLDEDCLGCFYACPAC
GSTKCGAECRCRDKWLYEQIEIEGGEIIHNKHAGTRTRPLEQKLISEEDLAANDILDY
KDDDDKV

Purity

> 80% as determined by SDS-PAGE and Coomassie blue staining

 Tel: 1-631-559-9269 1-516-512-3133

 Email: info@creative-biomart.com  Fax: 1-631-938-8127

 45-1 Ramsey Road, Shirley, NY 11967, USA

Stability	Stable for 3 months from receipt of products under proper storage and handling conditions.
Storage	Store at -80 centigrade. Avoid repeated freeze-thaw cycles.
Concentration	50 µg/mL as determined by BCA
Storage Buffer	100 mM glycine, 25 mM Tris-HCl, pH 7.3.

GENE INFORMATION

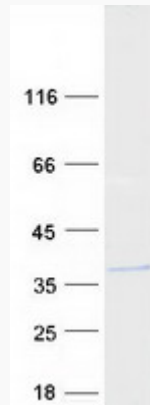
Gene Name	ARL14EP ADP ribosylation factor like GTPase 14 effector protein [Homo sapiens (human)]
Official Symbol	ARL14EP
Synonyms	ARL14EP; ADP ribosylation factor like GTPase 14 effector protein; ARF7EP; C11orf46; dJ299F11.1; ARL14 effector protein; ADP-ribosylation factor-like 14 effector protein; ARF7 effector protein
Gene ID	120534
mRNA Refseq	NM_152316
Protein Refseq	NP_689529
MIM	612295
UniProt ID	Q8N8R7

 Tel: 1-631-559-9269 1-516-512-3133

 Email: info@creative-biomart.com  Fax: 1-631-938-8127

 45-1 Ramsey Road, Shirley, NY 11967, USA

SDS-PAGE



 Tel: 1-631-559-9269 1-516-512-3133

 Email: info@creative-biomart.com  Fax: 1-631-938-8127

 45-1 Ramsey Road, Shirley, NY 11967, USA