

Recombinant Human ARL2 Protein, Myc/DDK-tagged, C13 and N15-labeled

Cat. No. ARL2-2117H **Lot. No.** (See product label)

SPECIFICATION

Product Overview	ARL2 MS Standard C13 and N15-labeled recombinant protein (NP_001658) with a C-terminal MYC/DDK tag, was expressed in HEK293 cells.
Species	Human
Source	HEK293
Description	This gene encodes a small GTP-binding protein of the RAS superfamily which functions as an ADP-ribosylation factor (ARF). The encoded protein is one of a functionally distinct group of ARF-like genes.
Molecular Mass	20.9 kDa
AA Sequence	MGLLTILKMKQKERELRLLMLGLDNAGKTTILKKFNGEDIDTISPTLGFNIKTLEHRG FKLNIWDVGGQKSLRSYWRNYFESTDGLIWVVDSDRQRMQDCQRELQSLLEVER LAGATLLIFANKQDLPGALSSNAIREVLELDSIRSHHWCIQGCSAVTGENLLPGIDWLL DDISSRIFTADTRTRPLEQKLISEEDLAANDILDYKDDDDKV
Purity	> 80% as determined by SDS-PAGE and Coomassie blue staining
Stability	Stable for 3 months from receipt of products under proper storage and handling conditions.
Storage	Store at -80 centigrade. Avoid repeated freeze-thaw cycles.

 Tel: 1-631-559-9269 1-516-512-3133

 Email: info@creative-biomart.com  Fax: 1-631-938-8127

 45-1 Ramsey Road, Shirley, NY 11967, USA

Concentration 50 µg/mL as determined by BCA

Storage Buffer 100 mM glycine, 25 mM Tris-HCl, pH 7.3.

GENE INFORMATION

Gene Name [ARL2 ADP-ribosylation factor-like 2 \[Homo sapiens \(human\) \]](#)

Official Symbol [ARL2](#)

Synonyms ARL2; ADP-ribosylation factor-like 2; ADP-ribosylation factor-like protein 2; ARFL2;

Gene ID [402](#)

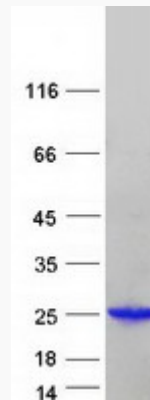
mRNA Refseq [NM_001667](#)

Protein Refseq [NP_001658](#)

MIM [601175](#)

UniProt ID [P36404](#)

SDS-PAGE



 Tel: 1-631-559-9269 1-516-512-3133

 Email: info@creative-biomart.com  Fax: 1-631-938-8127

 45-1 Ramsey Road, Shirley, NY 11967, USA