

Recombinant Human ARL2 protein, GST-tagged

Cat. No. ARL2-808H **Lot. No.** (See product label)

SPECIFICATION

Product Overview	Human ARL2 full-length ORF (AAH02530, 1 a.a. - 184 a.a.) recombinant protein with GST-tag at N-terminal.
Species	Human
Source	Wheat Germ
Description	ARL5B (ARL8) belongs to a family of proteins that are structurally similar to ADP-ribosylation factors (ARFs; see MIM 103180). ARLs and ARFs are part of the RAS superfamily of regulatory GTPases.[supplied by OMIM, Nov 2010]
Molecular Mass	45.98 kDa
AA Sequence	MGLLTILKMKQKERELRLLMLGLDNAGKTTILKKFNGEDIDTISPTLGFNIKTLEHRG FKLNIWDVGGQKSLRSYWRNYFESTDGLIWWVDSADRQRMQDCQRELQSLLVEER LAGATLLIFANKQDLPGALSSNAIREVLELDSIRSHHWCIQGCSAVTGENLLPGIDWLL DDISSRIFTAD
Applications	Enzyme-linked Immunoabsorbent Assay; Western Blot (Recombinant protein); Antibody Production; Protein Array
Notes	Best use within three months from the date of receipt of this protein.
Storage	Store at -80 centigrade. Aliquot to avoid repeated freezing and thawing.

 Tel: 1-631-559-9269 1-516-512-3133

 Email: info@creative-biomart.com  Fax: 1-631-938-8127

 45-1 Ramsey Road, Shirley, NY 11967, USA

Storage Buffer 50 mM Tris-HCl, 10 mM reduced Glutathione, pH=8.0 in the elution buffer.

GENE INFORMATION

Gene Name [ARL2 ADP-ribosylation factor-like 2 \[Homo sapiens \]](#)

Official Symbol [ARL2](#)

Synonyms ARL2; ADP-ribosylation factor-like 2; ADP-ribosylation factor-like protein 2; ARFL2;

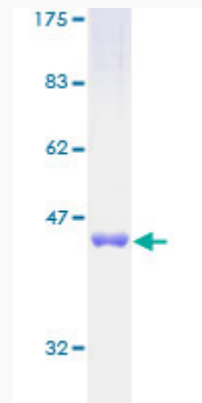
Gene ID [402](#)

mRNA Refseq [NM_001199745](#)

Protein Refseq [NP_001186674](#)

MIM [601175](#)

UniProt ID [P36404](#)



12.5% SDS-PAGE Stained with Coomassie Blue.

 Tel: 1-631-559-9269 1-516-512-3133

 Email: info@creative-biomart.com  Fax: 1-631-938-8127

 45-1 Ramsey Road, Shirley, NY 11967, USA