

## Recombinant Human ARL3 protein, GST-tagged

Cat. No. ARL3-810H Lot. No. (See product label)

### SPECIFICATION

<b>Product Overview</b>	Human ARL3 full-length ORF ( AAH09841, 1 a.a. - 182 a.a.) recombinant protein with GST-tag at N-terminal.
<b>Species</b>	Human
<b>Source</b>	Wheat Germ
<b>Description</b>	ADP-ribosylation factor-like 3 is a member of the ADP-ribosylation factor family of GTP-binding proteins. ARL3 binds guanine nucleotides but lacks ADP-ribosylation factor activity. [provided by RefSeq, Jul 2008]
<b>Molecular Mass</b>	45.76 kDa
<b>AA Sequence</b>	MGLLSILRKLKSAPDQEVRIILLGLDNAGKTTLLKQLASEDISHITPTQGFNIKSVQSQ GFKLNVDIGGQRKIRPYWKNYFENDILIIYVIDSADRKRFEETGQELAEELLEEEKLS CVPVLIFANKQDLLTAAPASEIAEGLNLHTIRDRVWQIQSCSALTGEGVQDGMNWVC KNVNAKKK
<b>Applications</b>	Enzyme-linked Immunoabsorbent Assay; Western Blot (Recombinant protein); Antibody Production; Protein Array
<b>Notes</b>	Best use within three months from the date of receipt of this protein.
<b>Storage</b>	Store at -80 centigrade. Aliquot to avoid repeated freezing and thawing.

 Tel: 1-631-559-9269 1-516-512-3133

 Email: [info@creative-biomart.com](mailto:info@creative-biomart.com)  Fax: 1-631-938-8127

 45-1 Ramsey Road, Shirley, NY 11967, USA

**Storage Buffer** 50 mM Tris-HCl, 10 mM reduced Glutathione, pH=8.0 in the elution buffer.

## GENE INFORMATION

**Gene Name** [ARL3 ADP-ribosylation factor-like 3 \[ Homo sapiens \]](#)

**Official Symbol** [ARL3](#)

**Synonyms** ARL3; ADP-ribosylation factor-like 3; ADP-ribosylation factor-like protein 3; ARFL3; ARF-like 3;

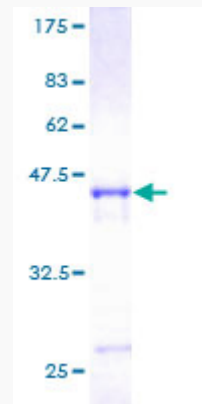
**Gene ID** [403](#)

**mRNA Refseq** [NM\\_004311](#)

**Protein Refseq** [NP\\_004302](#)

**MIM** [604695](#)

**UniProt ID** [P36405](#)



 Tel: 1-631-559-9269 1-516-512-3133

 Email: [info@creative-biomart.com](mailto:info@creative-biomart.com)  Fax: 1-631-938-8127

 45-1 Ramsey Road, Shirley, NY 11967, USA



12.5% SDS-PAGE Stained with Coomassie Blue.

 Tel: 1-631-559-9269 1-516-512-3133

 Email: [info@creative-biomart.com](mailto:info@creative-biomart.com)  Fax: 1-631-938-8127

 45-1 Ramsey Road, Shirley, NY 11967, USA