

## Recombinant Human ARL4A protein, GST-tagged

**Cat. No.** ARL4A-811H    **Lot. No.** (See product label)

### SPECIFICATION

<b>Product Overview</b>	Human ARL4A full-length ORF ( AAH01111, 1 a.a. - 200 a.a.) recombinant protein with GST-tag at N-terminal.
<b>Species</b>	Human
<b>Source</b>	Wheat Germ
<b>Description</b>	ADP-ribosylation factor-like 4A is a member of the ADP-ribosylation factor family of GTP-binding proteins. ARL4A is similar to ARL4C and ARL4D and each has a nuclear localization signal and an unusually high guanine nucleotide exchange rate. ARL4A is located in both the nuclear and extranuclear cell compartments. Multiple transcript variants encoding the same protein have been found for this gene. [provided by RefSeq, Jul 2008]
<b>Molecular Mass</b>	47.74 kDa
<b>AA Sequence</b>	MGNGLSDQTSILSNLPSFQSFHIVILGLDCAGKTTVLYRLQFNEFVNTVPTKGFNTEKI KVTLGNSKTVTFHFWDVGGQEKLRPLWKS YTRCTDGIVFVVDSDVERMEEAKTEL HKITRISENQGVPLIVANKQDLRNSLSLSEIEKLLAMGELSSSTPWHLQPTCAIIGDG LKEGLEKLHDMIKRRKMLRQQKKKR
<b>Applications</b>	Enzyme-linked Immunoabsorbent Assay; Western Blot (Recombinant protein); Antibody Production; Protein Array
<b>Notes</b>	Best use within three months from the date of receipt of this protein.

 Tel: 1-631-559-9269    1-516-512-3133

 Email: [info@creative-biomart.com](mailto:info@creative-biomart.com)     Fax: 1-631-938-8127

 45-1 Ramsey Road, Shirley, NY 11967, USA

**Storage** Store at -80 centigrade. Aliquot to avoid repeated freezing and thawing.

**Storage Buffer** 50 mM Tris-HCl, 10 mM reduced Glutathione, pH=8.0 in the elution buffer.

## GENE INFORMATION

**Gene Name** [ARL4A ADP-ribosylation factor-like 4A \[ Homo sapiens \]](#)

**Official Symbol** [ARL4A](#)

**Synonyms** ARL4A; ADP-ribosylation factor-like 4A; ADP ribosylation factor like 4 , ARL4; ADP-ribosylation factor-like protein 4A; ADP-ribosylation factor-like 4; ARL4;

**Gene ID** [10124](#)

**mRNA Refseq** [NM\\_001037164](#)

**Protein Refseq** [NP\\_001032241](#)

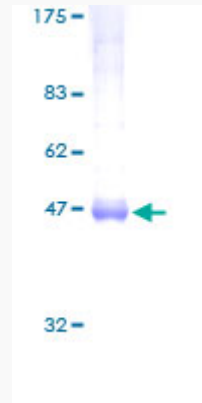
**MIM** [604786](#)

**UniProt ID** [P40617](#)

 Tel: 1-631-559-9269 1-516-512-3133

 Email: [info@creative-biomart.com](mailto:info@creative-biomart.com)  Fax: 1-631-938-8127

 45-1 Ramsey Road, Shirley, NY 11967, USA



12.5% SDS-PAGE Stained with Coomassie Blue.

Tel: 1-631-559-9269 1-516-512-3133

Email: [info@creative-biomart.com](mailto:info@creative-biomart.com) Fax: 1-631-938-8127

45-1 Ramsey Road, Shirley, NY 11967, USA