

Recombinant Human ARL4D protein, GST-tagged

Cat. No. ARL4D-813H Lot. No. (See product label)

SPECIFICATION

Product Overview	Human ARL4D full-length ORF (NP_001652.2, 1 a.a. - 201 a.a.) recombinant protein with GST-tag at N-terminal.
Species	Human
Source	Wheat Germ
Description	ADP-ribosylation factor 4D is a member of the ADP-ribosylation factor family of GTP-binding proteins. ARL4D is closely similar to ARL4A and ARL4C and each has a nuclear localization signal and an unusually high guanine nucleotide exchange rate. This protein may play a role in membrane-associated intracellular trafficking. Mutations in this gene have been associated with Bardet-Biedl syndrome (BBS). [provided by RefSeq, Jul 2008]
Molecular Mass	48.6 kDa
AA Sequence	MGNHLTEMAPTASSFLPHFQALHVVVIGLDSAGKTSLLYRLKFKEFVQSVPTKGFNT EKIRVPLGGSRGITFQVWDVGGQEKLRLPLWRSYTRRTDGLVFVVDAAEAERLEEAK VELHRISRASDNQGVPVLVLANKQDQPGALSAAEVEKRLAVRELAATLTHVQGCS AVDGLGLQQGLERLYEMILKRKKAARGGKKRR
Applications	Enzyme-linked Immunoabsorbent Assay; Western Blot (Recombinant protein); Antibody Production; Protein Array
Notes	Best use within three months from the date of receipt of this protein.

 Tel: 1-631-559-9269 1-516-512-3133

 Email: info@creative-biomart.com  Fax: 1-631-938-8127

 45-1 Ramsey Road, Shirley, NY 11967, USA

Storage Store at -80 centigrade. Aliquot to avoid repeated freezing and thawing.

Storage Buffer 50 mM Tris-HCl, 10 mM reduced Glutathione, pH=8.0 in the elution buffer.

GENE INFORMATION

Gene Name [ARL4D ADP-ribosylation factor-like 4D \[Homo sapiens \]](#)

Official Symbol [ARL4D](#)

Synonyms ARL4D; ADP-ribosylation factor-like 4D; ADP ribosylation factor 4 like , ARF4L; ADP-ribosylation factor-like protein 4D; ADP-ribosylation factor-like 6; ADP-ribosylation factor-like protein 4L; ARL6; ARF4L;

Gene ID [379](#)

mRNA Refseq [NM_001661](#)

Protein Refseq [NP_001652](#)

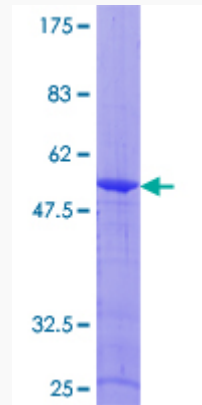
MIM [600732](#)

UniProt ID [P49703](#)

 Tel: 1-631-559-9269 1-516-512-3133

 Email: info@creative-biomart.com  Fax: 1-631-938-8127

 45-1 Ramsey Road, Shirley, NY 11967, USA



12.5% SDS-PAGE Stained with Coomassie Blue.

 Tel: 1-631-559-9269 1-516-512-3133

 Email: info@creative-biomart.com  Fax: 1-631-938-8127

 45-1 Ramsey Road, Shirley, NY 11967, USA