

## Recombinant Human ARL4D protein, His-tagged

Cat. No. ARL4D-9859H Lot. No. (See product label)

### SPECIFICATION

<b>Product Overview</b>	Recombinant Human ARL4D protein(1-201 aa), fused with N-terminal His tag, was expressed in E.coli.
<b>Species</b>	Human
<b>Source</b>	E.coli
<b>ProteinLength</b>	1-201 aa
<b>Form</b>	The purified protein was Lyophilized from sterile PBS (58mM Na <sub>2</sub> HPO <sub>4</sub> , 17mM NaH <sub>2</sub> PO <sub>4</sub> , 68mM NaCl, pH7.4). 5 % trehalose and 5 % mannitol are added as protectant before lyophilization. The elution buffer contain 300mM imidazole.
<b>AASequence</b>	MGNHLTEMAPTASSFLPHFQALHVVVIGLDSAGKTSLLYRLKFKEFVQSVPTKGFNT EKIRVPLGGSRGITFQVWDVGGQEKLRLPLWRSYTRRTDGLVFVDDAAEAERLEEAK VELHRISRASDNQGVPVLVLANKQDQPGALSAAEVEKRLAVRELAATLTHVQGCS AVDGLGLQQGLERLYEMILKRKKAARGGKKRR
<b>Purity</b>	80%, by SDS-PAGE with Coomassie Brilliant Blue staining.
<b>Storage</b>	Store at 2-8°C for 1-2 weeks. Aliquot and store at -20°C to -80°C for up to 3 months, reconstitution with sterile water and addition of an equal volume of glycerol. Avoid repeat freeze-thaw cycles.
<b>Reconstitution</b>	Dissolve the product in 200 µl sterile water to achieve a working concentration of 0.25

 Tel: 1-631-559-9269 1-516-512-3133

 Email: [info@creative-biomart.com](mailto:info@creative-biomart.com)  Fax: 1-631-938-8127

 45-1 Ramsey Road, Shirley, NY 11967, USA

g/μl. If experimental compatibility allows, mix the aqueous solution with an equal volume of glycerol (1:1 ratio) after initial reconstitution.

## GENE INFORMATION

<b>Gene Name</b>	ARL4D ADP-ribosylation factor-like 4D [ Homo sapiens ]
<b>Official Symbol</b>	ARL4D
<b>Synonyms</b>	ARL4D; ADP-ribosylation factor-like 4D; ADP ribosylation factor 4 like , ARF4L; ADP-ribosylation factor-like protein 4D; ADP-ribosylation factor-like 6; ADP-ribosylation factor-like protein 4L; ARL6; ARF4L;
<b>Gene ID</b>	379
<b>mRNA Refseq</b>	NM_001661
<b>Protein Refseq</b>	NP_001652
<b>MIM</b>	600732
<b>UniProt ID</b>	P49703

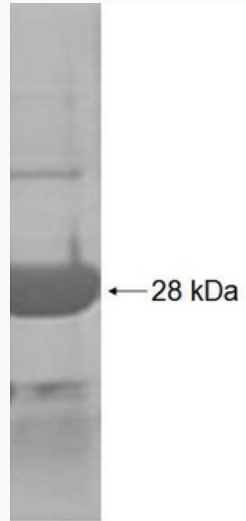
 Tel: 1-631-559-9269 1-516-512-3133

 Email: [info@creative-biomart.com](mailto:info@creative-biomart.com)  Fax: 1-631-938-8127

 45-1 Ramsey Road, Shirley, NY 11967, USA



SDS-PAGE



Tel: 1-631-559-9269 1-516-512-3133

Email: [info@creative-biomart.com](mailto:info@creative-biomart.com) Fax: 1-631-938-8127

45-1 Ramsey Road, Shirley, NY 11967, USA