

Recombinant Human ARL5 protein, GST-tagged

Cat. No. ARL5-814H **Lot. No.** (See product label)

SPECIFICATION

Product Overview	Human ARL5 full-length ORF (AAH01254, 1 a.a. - 179 a.a.) recombinant protein with GST-tag at N-terminal.
Species	Human
Source	Wheat Germ
Description	The protein encoded by this gene belongs to the ARF family of GTP-binding proteins. With its distinctive nuclear/nucleolar localization and interaction with HP1alpha, the protein is developmentally regulated and may play a role(s) in nuclear dynamics and/or signaling cascades during embryonic development. Alternative splicing results in multiple transcript variants encoding different isoforms. This gene has multiple pseudogenes. [provided by RefSeq, Jul 2008]
Molecular Mass	45.43 kDa
AA Sequence	MGILFTRIWRLFNHQEHKVIIVGLDNAGKTTILYQFSMNEVVHTSPTIGSNVEEIVINNT RFLMWDIGGQESLRSSWNTYYTNTTEFVIVVVDSTDRERISVTREELYKMLAHEDLRK AGLLIFANKQDVKECMTVAEISQFLKLTSIKDHQWHIQACCALTGEGLCQGLEWMMS RLKIR
Applications	Enzyme-linked Immunoabsorbent Assay; Western Blot (Recombinant protein); Antibody Production; Protein Array
Notes	Best use within three months from the date of receipt of this protein.

 Tel: 1-631-559-9269 1-516-512-3133

 Email: info@creative-biomart.com  Fax: 1-631-938-8127

 45-1 Ramsey Road, Shirley, NY 11967, USA

Storage Store at -80 centigrade. Aliquot to avoid repeated freezing and thawing.

Storage Buffer 50 mM Tris-HCl, 10 mM reduced Glutathione, pH=8.0 in the elution buffer.

GENE INFORMATION

Gene Name [ARL5A ADP-ribosylation factor-like 5A \[Homo sapiens \]](#)

Official Symbol [ARL5A](#)

Synonyms ARL5A; ADP-ribosylation factor-like 5A; ADP ribosylation factor like 5 , ARL5; ADP-ribosylation factor-like protein 5A; ADP-ribosylation factor-like 5; ADP-ribosylation factor-like protein 5; ARL5; ARFLP5;

Gene ID [26225](#)

mRNA Refseq [NM_001037174](#)

Protein Refseq [NP_001032251](#)

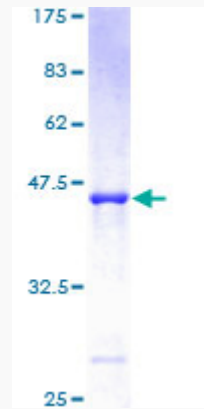
MIM [608960](#)

UniProt ID [Q9Y689](#)

 Tel: 1-631-559-9269 1-516-512-3133

 Email: info@creative-biomart.com  Fax: 1-631-938-8127

 45-1 Ramsey Road, Shirley, NY 11967, USA



12.5% SDS-PAGE Stained with Coomassie Blue.

 Tel: 1-631-559-9269 1-516-512-3133

 Email: info@creative-biomart.com  Fax: 1-631-938-8127

 45-1 Ramsey Road, Shirley, NY 11967, USA