

# Recombinant Human ARL5A Protein, Myc/DDK-tagged, C13 and N15-labeled

**Cat. No.** ARL5A-3819H    **Lot. No.** (See product label)

## SPECIFICATION

<b>Product Overview</b>	ARL5A MS Standard C13 and N15-labeled recombinant protein (NP_001032251) with a C-terminal MYC/DDK tag, was expressed in HEK293 cells.
<b>Species</b>	Human
<b>Source</b>	HEK293
<b>Description</b>	The protein encoded by this gene belongs to the ARF family of GTP-binding proteins. With its distinctive nuclear/nucleolar localization and interaction with HP1alpha, the protein is developmentally regulated and may play a role(s) in nuclear dynamics and/or signaling cascades during embryonic development. Alternative splicing results in multiple transcript variants encoding different isoforms. This gene has multiple pseudogenes.
<b>Molecular Mass</b>	20.73 kDa
<b>AA Sequence</b>	MGILFTRIWRLFNHQEHKVIIVGLDNAGKTTILYQFSMNEVVHTSPTIGSNVEEIVINNT RFLMWDIGGQESLRSSWNTYYTNTTEFVIVVVDSTDRERISVTREELYKMLAHEDLRK AGLLIFANKQDVKECMTVAEISQFLKLTSIKDHQWHIQACCALTGEGLCQGLEWMMS RLKIRTRTRPLEQKLISEEDLAANDILDYKDDDDKV
<b>Purity</b>	> 80% as determined by SDS-PAGE and Coomassie blue staining
<b>Stability</b>	Stable for 3 months from receipt of products under proper storage and handling

 Tel: 1-631-559-9269    1-516-512-3133

 Email: [info@creative-biomart.com](mailto:info@creative-biomart.com)     Fax: 1-631-938-8127

 45-1 Ramsey Road, Shirley, NY 11967, USA

conditions.

**Storage** Store at -80 centigrade. Avoid repeated freeze-thaw cycles.

**Concentration** 50 µg/mL as determined by BCA

**Storage Buffer** 100 mM glycine, 25 mM Tris-HCl, pH 7.3.

## GENE INFORMATION

**Gene Name** [ARL5A ADP-ribosylation factor-like 5A \[ Homo sapiens \(human\) \]](#)

**Official Symbol** [ARL5A](#)

**Synonyms** ARL5A; ADP-ribosylation factor-like 5A; ADP ribosylation factor like 5, ARL5; ADP-ribosylation factor-like protein 5A; ADP-ribosylation factor-like 5; ADP-ribosylation factor-like protein 5; ARL5; ARFLP5;

**Gene ID** [26225](#)

**mRNA Refseq** [NM\\_001037174](#)

**Protein Refseq** [NP\\_001032251](#)

**MIM** [608960](#)

**UniProt ID** [Q9Y689](#)

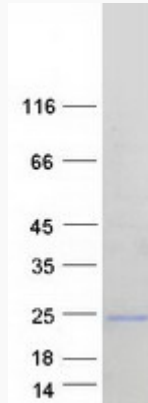
 Tel: 1-631-559-9269 1-516-512-3133

 Email: [info@creative-biomart.com](mailto:info@creative-biomart.com)  Fax: 1-631-938-8127

 45-1 Ramsey Road, Shirley, NY 11967, USA



SDS-PAGE



Tel: 1-631-559-9269 1-516-512-3133

Email: [info@creative-biomart.com](mailto:info@creative-biomart.com) Fax: 1-631-938-8127

45-1 Ramsey Road, Shirley, NY 11967, USA